

***Platyphora* Gistel, 1857 from Itatiaia National Park, southeastern Brazil: new synonymy and new records (Insecta, Coleoptera, Chrysomelidae)**

Aline Sampaio^{1*} & Marcela Monné¹

¹Universidade Federal do Rio de Janeiro, Museu Nacional, Departamento de Entomologia,
Rio de Janeiro, RJ, Brazil.

*Corresponding author: Aline Sampaio, e-mail: alinebioufpi@gmail.com

SAMPAIO, A., MONNÉ, M. ***Platyphora* Gistel, 1857 from Itatiaia National Park, southeastern Brazil: new synonymy and new records (Insecta, Coleoptera, Chrysomelidae)**. Biota Neotropica. 18(1): e20170447. <http://dx.doi.org/10.1590/1676-0611-BN-2017-0447>

Abstract: *Platyphora* Gistel, 1857 is the largest genus in Chrysomelinae with about 450 species of which 181 occur in Brazil. The Itatiaia National Park is one of the most important Conservation Units of the Atlantic Rainforest and 36 *Platyphora* species are recorded from the park. We have recorded 38 species of *Platyphora*. The synonymy of *Platyphora fraterna* (Stål, 1857) and *Platyphora fasciatomaculata* (Stål, 1857) is proposed. *Platyphora bilimbata* (Stål, 1857), *P. carolina* (Stål, 1858) and *P. semiviridis* (Jacoby, 1903) are new records for the park; additional distributional records are provided for 18 species. Of the 38 species, 24 are illustrated for the first time.

Keywords: Chrysomelinae, Taxonomy, Atlantic Forest, New synonymy, New records.

***Platyphora* Gistel, 1857 do Parque Nacional do Itatiaia, Sudeste do Brasil: nova sinonímia e novos registros (Insecta, Coleoptera, Chrysomelidae)**

Resumo: *Platyphora* Gistel, 1857 é o gênero em Chrysomelinae com maior número de espécies, cerca de 450, onde 181 ocorrem no Brasil. O Parque Nacional do Itatiaia é uma das mais importantes unidades de conservação da Mata Atlântica e apresenta 36 espécies de *Platyphora* registradas. Neste trabalho registramos 38 espécies de *Platyphora*. É proposta a sinonímia entre *Platyphora fraterna* (Stål, 1857) e *Platyphora fasciatomaculata* (Stål, 1857). *Platyphora bilimbata* (Stål, 1857), *P. carolina* (Stål, 1858) e *P. semiviridis* (Jacoby, 1903) são novos registros para o parque e são assinalados novos registros de distribuição para 18 espécies. Das 38 espécies, 24 são ilustradas pela primeira vez.

Palavras-chave: Chrysomelinae, Taxonomia, Mata Atlântica, Nova sinonímia, Novos registros.

Introduction

The family Chrysomelidae contains about 40,000 species in 12 subfamilies: Bruchinae, Cassidinae, Chryptocephalinae, Chrysomelinae, Criocerinae, Donaciinae, Eumolpinae, Galerucinae, Lamprosomatinae, Sagrinae, Spilopyrinae and Syntetinae (Bouchard et al. 2011, Chaboo et al. 2014). Chrysomelinae consists of 150 genera and about 3,000 species, with 544 species recorded in Brazil (Chaboo et al. 2014, Reid 2014, Sekerka 2016). *Platyphora* Gistel, 1857 is among the most species-rich genera in Chrysomelinae, with about 450 species, 181 of them recorded for Brazil (Blackwelder 1946, Daccordi 1994, Sekerka 2016, Sampaio & Monné 2017).

Itatiaia National Park (PNI) is the oldest national park in Brazil, established in 1937, and one of the most important Conservation Units of the Atlantic Rainforest (ICMBio 2013). The Atlantic Rainforest is one of the most relevant eco-regions in the world, a biodiversity hotspot, and is considered one of the most threatened biomes on the planet (Morellato & Haddad 2000). Concerning the beetle fauna in the PNI, knowledge of the species of Chrysomelinae is limited. A single paper published by Zikán & Zikán (1967) listed 77 species of Chrysomelinae;

of these, 34 are members of *Platyphora*. Of these species, two were synonymized by Bechyné (1948, 1950a) and five species and one subspecies had previously been recorded for the park: *P. notaticollis* (Stål, 1858), *P. congener* (Stål, 1858), *P. manhumirima* Bechyné, 1958, *P. pastica bourcierii* (Guérin-Méneville, 1855), *P. placida* (Stål, 1858) and *P. quadrisignata* (Germar, 1823) (Bechyné 1951a, Bechyné & Bechyné 1965). Sampaio & Monné (2017) proposed the synonymy of *Platyphora cliens* (Stål, 1858) and *Platyphora congener* (Stål, 1858). Thirty-six species of *Platyphora* are recorded for the PNI.

This contribution presents a revision of the literature on *Platyphora* species from Itatiaia National Park, providing new distribution data and illustrations of the species. This information gives us a better understanding of which species are being protected within the national park.

Material and Methods

The Itatiaia National Park (PNI) is located between 22°19'–22°45' S and 044°15'–044°50' W, and covers part of southwestern Rio de Janeiro, in the county of Itatiaia, and southeastern Minas Gerais, in the counties of Itamonte, Alagoa and Bocaina de Minas. The park is surrounded by

the Mantiqueira Range Environmental Protection Area, which provides an ecological buffer zone for the park (ICMBio 2013).

Abbreviations cited in the text are as follows:

DZRJ - Departamento de Zoologia, Instituto de Biologia, Universidade Federal do Rio de Janeiro, Rio de Janeiro, Brazil;

FIOC - Fundação Oswaldo Cruz, Rio de Janeiro, Brazil;

MNHN - Muséum National d'Histoire Naturelle, Paris, France;

MNRJ - Museu Nacional, Universidade Federal do Rio de Janeiro, Rio de Janeiro, Brazil;

MZSP - Museu de Zoologia, Universidade de São Paulo, São Paulo, Brazil;

NHMH - Naturhistorisches Museum, Vienna, Austria;

NHRS - Naturhistoriska Riksmuseet, Stockholm, Sweden;

ZMHB - Museum für Naturkunde der Humboldt-Universität, Berlin, Germany;

ZSMC - Zoologische Staatssammlung des Bayerischen Staates, Munich, Germany.

The species were identified based on the original description, redescription, and by comparison with type material. In total, 842 specimens and photographs of 22 types (11 holotypes and 11 syntypes), provided by the curators of the respective collections, and the paratype of *P. manhumirima* Bechyné, 1958 from MZSP were studied. The list of species is presented in alphabetical order, and all references are included in a catalog list, with the information presented in the following format: author, publication year, and page. This is followed by the type of study, indicated by one of the following abbreviations: biological data (biol.); catalogue (cat.); geographical distribution (distr.); host plant (host); key to aberration (key ab.); checklist online (check.) and synonym (syn.).

Results

Of the 36 species of *Platyphora* previously recorded for Itatiaia National Park, *P. fulgora* (Stål, 1858) was erroneously recorded by Zikán & Zikán (1967); this species occurs only in Colombia. A total of 38 species of *Platyphora* are recorded for the park. The synonymy of *Platyphora fraterna* (Stål, 1857) and *Platyphora fasciatomaculata* (Stål, 1857) is proposed. *Platyphora bilimbata* (Stål, 1857), *P. carolina* (Stål, 1858) and *P. semiviridis* (Jacoby, 1903) are new records for the PNI, and new additional records are provided for 18 species. The study of *P. nigripes* (Stål, 1857) and *P. vidanoi* Daccordi, 1994 were restricted to the literature, and of *P. jucunda* (Stål, 1857) to photographs of the type. Of the 38 species, 24 are illustrated for the first time; and a complete list of bibliographic references for the species is also provided for the first time.

Platyphora acuminata acuminata (Olivier, 1790)

(Figure 1A)

Chrysomela acuminata Olivier, 1790: 691; Stål, 1865: 321.

Doryphora acuminata; Olivier, 1807: 587; Stål, 1863: 133; Gemminger & Harold, 1874: 3445 (cat.); Blackwelder, 1946: 667 (cat.).

Doryphora (Doryphora) acuminata; Weise, 1916: 10 (cat.).

Chrysomela cupraria var. c; Stål, 1863: 133.

Doryphorella acuminata; Bechyné, 1946: 91 (key ab.).

Stichotaenia acuminata; Bechyné, 1950a: 131 (distr., host); 1951b: 63 (distr.); 1952: 45 (cat.); Zikán & Zikán, 1967: 131 (distr.).

Stichotaenia acuminata acuminata; Bechyné, 1950a: 131 (distr.).

Platyphora acuminata acuminata; Sekerka, 2016 (check.).

Doryphora cupraria Germar 1823: 577.

Chrysomela cupraria; Stål, 1863: 132.

Doryphora (Doryphora) acuminata ab. *cupraria*; Weise, 1916: 10 (cat.).

Doryphora acuminata ab. *cupraria*; Blackwelder, 1946: 667 (cat.).

Doryphorella acuminata ab. *cupraria*; Bechyné, 1946: 91 (key ab.).

Stichotaenia acuminata ab. *cupraria*; Bechyné, 1950a: 131 (distr.); 1952: 45 (cat.).

Doryphora viridicuprea Stål, 1858: 58.

Chrysomela cupraria var. b; Stål, 1863: 133.

Doryphora acuminata var. *viridicuprea*; Gemminger & Harold, 1874: 3445 (cat.).

Doryphorella acuminata ab. *viridicuprea*; Bechyné, 1946: 91 (key ab.).

Stichotaenia acuminata ab. *viridicuprea*; Bechyné, 1950a: 131 (distr.); 1952: 45 (cat.); Zikán & Zikán, 1967: 131 (distr.).

Geographical distribution: Weise (1916) recorded the species for Rio de Janeiro; Bechyné (1950a) recorded it for Rio de Janeiro (PNI and Teresópolis) and Espírito Santo. New records for Minas Gerais and São Paulo.

Material examined: BRAZIL. Minas Gerais: *Catas Altas (Serra do Caraça)*, 1♂, XII.1962, F. M. Oliveira leg. (MNRJ); *Juiz de Fora*, 2♂, XII.1980, G. S. Andrade leg. (MNRJ); 1♀, II.1982, G. S. Andrade leg. (MNRJ); *Manhumirim*, 2♂, 30.III.1937, Zellibor-Hauff leg. (MNRJ); 1♂, [no date and no collector] (MZSP); *Mar de Espanha*, 1♀, 1975, Erwerb leg. (ZSMC); *Passa Quatro*, 2♂ and 1♀, XI.1914, illegible collector (MNRJ); 1♀, 19.II.1961, D. Zajciw leg. (MNRJ). Espírito Santo: *Guandú*, 2♂, X.1920, F. Hoffmann leg. (MNRJ); 1♀, 14. XI.1920, F. Hoffmann leg. (MNRJ); 1♂, 20.XI.1920, F. Hoffmann leg. (MNRJ); *Rio Bonito*, 1♀, [no date and no collector] (MNRJ). Rio de Janeiro: *Itatiaia*, 1♀, III.1928, J. F. Zikán leg. (FIOC); 1♀, XII.1931, J. F. Zikán leg. (FIOC); 1♂ and 1♀, 17.XI.1932, 1100m, W. Zikán leg. (MNRJ); 2♀, 23.XI.1932, 1380m, W. Zikán leg. (MNRJ); 2♂, 27.XI.1932, 1100m, W. Zikán leg. (MNRJ); 1♂, 30.XI.1936, 1380m, J. F. Zikán leg. (FIOC); 1♂, XII.1939, Dirings leg. (MZSP); 1♀, XI.1950, Travassos & Dalcy leg. (MNRJ); 2♀, I.1959, J. Guimarães leg. (MNRJ); 1♀, I.1960, Dirings leg. (MZSP); 1♀, 22-26.XII.2007, 1250M, J. R. Mermudes, M. L. Monné & M. A. Monné leg. (MNRJ); 1♂, 11-14.I.2008, 750m, M. L. Monné, J. R. Mermudes, H. S. Monné & M. A. Monné leg. (MNRJ); *Nova Friburgo*, 2♂, I.1964 (Muri), D. Zajciw leg. (MNRJ); 1♂, III.1969, S. Fragozo leg. (MNRJ); *Rio de Janeiro (Ipanema)*, 1♂, [no date], Natterer leg. (MNRJ); *Serra Macaé*, 1♂, 14.III.1920, [without collector] (MZSP). São Paulo: *Cantareira*, 1♂, 5.II.1929, Zellibor-Hauff leg. (MNRJ); 1♂, 8.III.1960, F. Halik leg. (MZSP); 1♂, I.1962, Dirings leg. (MZSP); 1♀, II.1962, Dirings leg. (MZSP).

Platyphora ahena (Stål, 1863)

(Figure 1B)

Chrysomela ahena Stål, 1863: 132.

Doryphora ahena; Gemminger & Harold, 1874: 3445 (cat.); Blackwelder, 1946: 668 (cat.).

Doryphora (Doryphora) ahena; Weise, 1916: 11 (cat.).

Stichotaenia ahena; Zikán & Zikán, 1967: 131 (distr.).

Platyphora ahena; Sekerka, 2016 (check.).

Geographical distribution: Zikán & Zikán (1967) recorded it for Rio de Janeiro (Itatiaia).

Material examined: BRAZIL. Rio de Janeiro: *Itatiaia*, 1♂, II.1922, Dário Mendes leg. (MNRJ).

Platyphora axillaris (Germar, 1823)

(Figures 1C-1E)

Doryphora axillaris Germar, 1823: 579; Sturm, 1826: 133; 1843: 287; Dejean, 1833: 396; 1837: 420; Motschulsky, 1860: 183; Gemminger & Harold, 1874: 3446 (cat.); Blackwelder, 1946: 668 (cat.).

Stichotaenia axillaris; Motschulsky, 1860: 183; Bechyné, 1950b: 299; 1951a: 77 (distr.); 1952: 45 (distr.); 1955: 5; Zikán & Zikán, 1967: 132 (cat.).

Chrysomela axillaris; Stål, 1862: 63.

Doryphora (Doryphora) axillaris; Weise, 1916: 12 (cat.).

Platyphora axillaris; Morgado et al., 2009: 1, 2; Flinte et al., 2015: 119, 121-129, fig. 1c; Sekerka, 2016 (check.); Flinte et al., 2017: 9, fig. 1E (check.).

Geographical distribution: Stål (1862) recorded the species for Rio de Janeiro; Bechyné (1951a) registered it for Brazil (Rio de Janeiro, in Itatiaia) and Argentina (Misiones); Bechyné (1952) recorded it for Brazil

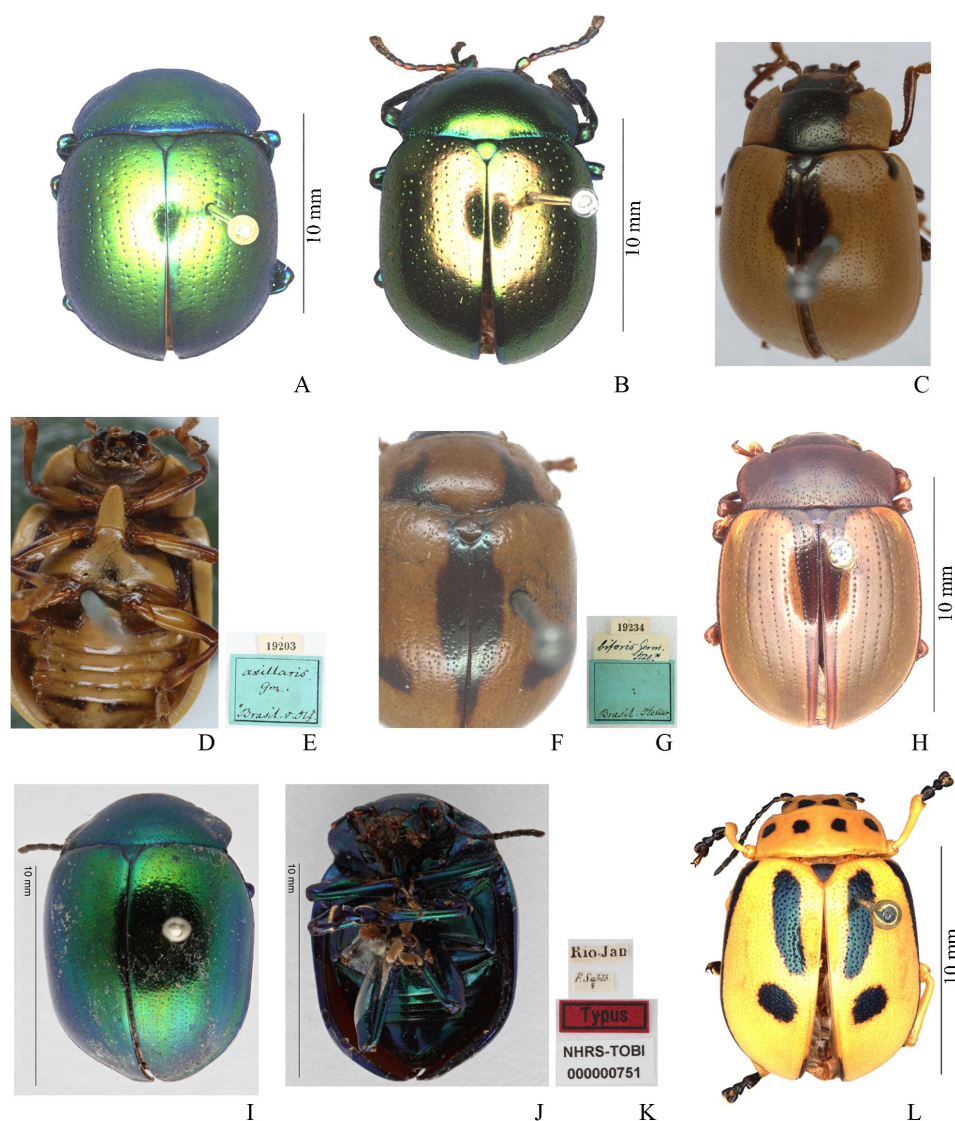


Figure 1. A, dorsal view of *Platyphora acuminata acuminata* (Olivier, 1790); B, dorsal view of *Platyphora athena* (Stål, 1863); C-E, syntype of *Platyphora axillaris* (Germar, 1823), C, dorsal view, D, ventral view, E, labels; F-G, syntype of *Platyphora biforis* (Germar, 1823), F, dorsal view, G, labels; H, dorsal view of *Platyphora bilimbata* (Stål, 1857); I-K, holotype of *Platyphora bonvouloiri* (Stål, 1859), I, dorsal view, J, ventral view, K, labels; L, dorsal view of *Platyphora carolina* (Stål, 1858). Figs. C-G © J. Willers/ZMHB. Figs. I-K photographed by J. Bergsten (© 2016 Naturhistoriska Riksmuseet). Made available by the Swedish Museum of Natural History under Creative Commons Attribution 4.0 International Public License, CC-BY 4.0, <https://creativecommons.org/licenses/by/4.0/legalcode>.

(Minas Gerais, São Paulo and Santa Catarina) and Paraguay; and Bechyné & Bechyné (1965) registered it for Bahia, Goiás and Espírito Santo.

Type material: We examined photographs of the syntype of *P. axillaris* (Figures 1C-1E) from Brazil (ZMHB).

Material examined: BRAZIL. Minas Gerais, *Passa Quatro*, 1 specimen, I.1915, illegible collector (MNRJ); 1 specimen, 19.II.1961, D. Zajciw leg. (MNRJ). Espírito Santo: *Afonso Cláudio*, 1 specimen, 20.IX.1928, illegible collector (MNRJ); 1 specimen, [no date and no collector] (MNRJ); *Colatina*, 1 specimen, 10.X.1936, [without collector] (MNRJ); 1 specimen, X.1936, M. Rosa leg. (MNRJ); *Linhares*, 1 specimen, XII.1967, B. Silva leg. (MNRJ); 3 specimens, X.1968, F. M. Oliveira leg. (MNRJ); 1 specimen, XII.1969, B. Silva leg. (MNRJ); 1 specimen, IX.1970, B. Silva leg. (MNRJ); 1 specimen, X.1970, B. Silva leg. (MNRJ); 2 specimens, [no date and no collector] (MNRJ); *Santa Teresa*, 1 specimen,

18.X.1928, O. Conde leg. (ZSMC); 1 specimen, 4.XII.1936, [without collector] (MNRJ). Rio de Janeiro: *Angra dos Reis (Jussara)*, 4 specimens, I.1935, D. Mendes leg. (MNRJ); 1 specimen, IX.1935, D. Mendes leg. (MNRJ); *Itatiaia*, 1 specimen, 18.III.1922, [without collector] (MNRJ); 1 specimen, 9.I.1925, 700m, J. F. Zikán leg. (FIOC); 2 specimens, 25.XI.1942, 1380m, W. Zikán leg. (MNRJ); 1 specimen, 20.IV.1943, [without collector] (MNRJ); 1 specimen, 26.XII.2001, 1200m, M. L. Monné & M. A. Monné leg. (MNRJ); 1 specimen, 28.IX.2007, 1100m, C. Patiu, J. R. Mermudes, M. L. Monné & M. A. Monné leg. (MNRJ); 1 specimen, 22-26.XII.2007, 1250m, J. R. Mermudes, M. L. Monné & M. A. Monné leg. (MNRJ); 3 specimens, 1-4.X.2009, 1250m, M. L. Monné, J. R. Mermudes & M. A. Monné leg. (MNRJ); 1 specimen, 23.IX.2011, 1250m, M. A. Monné, M. L. Monné, M. Cupello, J. P. Botero, R. Souza & M. Simões leg. (MNRJ); 6 specimens, 4.XI.2015, 1200m, A. A. Sampaio leg.

(MNRJ); *Nova Friburgo*, 1 specimen, 21.IV.1937, S. Lopes leg. (MNRJ); 1 specimen, 30.IV.1937, S. Lopes leg. (MNRJ); 1 specimen, I.1964 (Muri), D. Zajciw leg. (MNRJ); 4 specimens, IV.1968, S. Fragoso leg. (MNRJ); 1 specimen, 27.III.1969, S. Fragoso leg. (MNRJ); 4 specimens, XII.1970, F. M. Oliveira leg. (MNRJ); *Petrópolis*, 1 specimen, 24/I-23/II de 1936, D. Albuquerque leg. (MNRJ); 1 specimen, III.1957, Darcy leg. (MNRJ); *Rio de Janeiro*, 1 specimen, III.1934 (Floresta da Tijuca), C. A. Campos Seabra leg. (MNRJ); 2 specimens, IX.1932 (Tijuca), R. Vosgien leg. (MNRJ); 1 specimen, I.1963 (Represa Rio Grande), F. M. Oliveira leg. (MNRJ); 1 specimen, IV.1929 (Pinheiro), M. Melo leg. (MNRJ); 1 specimen, II.1924, Dário Mendes leg. (MNRJ); 1 specimen, XI.1931, G. Bondar leg. (MNRJ); 1 specimen, 10.IV.1944, Wygodzinsky leg. (MNRJ); 1 specimen, [no date and no collector] (NHMW); 1 specimen, VIII.1934 (Jacarepaguá), Lopes Proença leg. (MNRJ); *Teresópolis*, 1 specimen, 25.I.1957, D. Zajciw leg. (MNRJ). Santa Catarina: *Corupá*, 1 specimen, [no date and no collector] (MNRJ); *Jaraguá do Sul*, 1 specimen, XI.1937, A. Maller leg. (MNRJ); *São Bento*, 2 specimens, 1921, J. Nadera leg. (MNRJ); II.1956 (Rio Natal), A. Maller leg. (MNRJ).

***Platyphora biforis* (Germar, 1823)
(Figures 1F, 1G)**

Doryphora biforis Germar, 1823: 578; Dejean, 1833: 397; 1837: 421; Sturm, 1843: 287; Gemminger & Harold, 1874: 3447 (cat.); Blackwelder, 1946: 668 (cat.).

Chrysomela biforis; Stål, 1863: 95.

Doryphora (Doryphora) biforis; Weise, 1916: 13 (cat.).

Stichotaenia biforis; Bechyné, 1948: 299, figs. 7-10, 302; 1950a: 124 (distr.); 1952: 46 (cat.); 1953: 14 (key); Zikán & Zikán, 1967: 132 (distr.).

Stichotaenia biforis ab. *biforis*; Bechyné, 1948: 303 (key ab.).

Platyphora biforis; Bechyné, 1958: 533 (distr.); Olckers, 1999: 69 (biol.); 2000: 497, 498, 499, 504, 505, 507 (biol.); Beenen, 2005: 182 (biol.); Chaboo et al., 2014: 19 (biol.); Sekerka, 2016 (check.); Flinte et al., 2017: 9 (check.).

Doryphora anastomozans Perty, 1832: 106; Gemminger & Harold, 1874: 3446 (cat.); Blackwelder, 1946: 668 (cat.); Bechyné, 1948: 303 (key ab.).

Chrysomela anastomozans; Stål, 1863: 96.

Stichotaenia biforis ab. *anastomozans*; Bechyné, 1948: 303 (key ab.); 1952: 46 (cat.).

Platyphora anastomozans; Medeiros & Vasconcellos-Neto, 1994: 185, 187 (biol.); Windsor et al., 2013: 74 (biol.); Chaboo et al., 2014: 19 (biol.); Dury et al., 2014: 3 (biol.); Flinte et al., 2015: 128 (biol.).

Doryphora vicina Stål, 1857: 55; 1863: 95 (syn.).

Doryphora discifera Stål, 1858: 472; Gemminger & Harold, 1874: 3448 (cat.); Blackwelder, 1946: 669 (cat.).

Chrysomela discifera; Stål, 1863: 99.

Doryphora (Doryphora) discifera; Weise, 1916: 15 (cat.).

Stichotaenia biforis ab. *discifera*; Bechyné, 1948: 303 (key ab.); 1952: 46 (cat.).

Doryphora approximata Stål, 1858: 472; Gemminger & Harold, 1874: 3446 (cat.); Blackwelder, 1946: 668 (cat.); Bechyné, 1948: 303 (key ab.).

Doryphora (Doryphora) approximata; Weise, 1916: 12 (cat.).

Stichotaenia biforis ab. *approximata*; Bechyné, 1948: 303 (key ab.); 1950a: 124 (distr.); 1952: 46 (cat.).

Stichotaenia approximata; Zikán & Zikán, 1967: 131 (distr.).

Doryphora sororia Stål, 1858: 472.

Chrysomela anastomozans var. *e*; Stål, 1863: 97.

Doryphora anastomozans var. *sororia*; Gemminger & Harold, 1874: 3446 (cat.).

Doryphora (Doryphora) anastomozans ab. *sororia*; Weise, 1916: 11 (cat.).

Doryphora anastomozans ab. *sororia*; Blackwelder, 1946: 668 (cat.).

Stichotaenia biforis ab. *sororia*; Bechyné, 1948: 303 (key ab.); 1952: 46 (cat.).

Doryphora dubitabilis Stål, 1858: 472.

Chrysomela anastomozans var. *d*; Stål, 1863: 97.

Doryphora anastomozans var. *dubitabilis*; Gemminger & Harold, 1874: 3446 (cat.).

Doryphora (Doryphora) anastomozans ab. *dubitabilis*; Weise, 1916: 11 (cat.).

Doryphora anastomozans ab. *dubitabilis*; Blackwelder, 1946: 668 (cat.).

Stichotaenia biforis ab. *dubitabilis*; Bechyné, 1948: 303 (key ab.); 1952: 46 (cat.).

Doryphora compater Stål, 1858: 473; Gemminger & Harold, 1874: 3448 (cat.); Blackwelder, 1946: 669 (cat.).

Chrysomela compater; Stål, 1863: 98.

Doryphora (Doryphora) compater; Weise, 1916: 14 (cat.).

Stichotaenia biforis ab. *compater*; Bechyné, 1948: 303 (key ab.); 1952: 46 (cat.).

Chrysomela cinxia Stål, 1863: 97 (syn.); 1865: 343.

Doryphora brevifasciata Jacoby, 1903: 31; Blackwelder, 1946: 668 (cat.).

Doryphora (Doryphora) brevifasciata; Weise, 1916: 13 (cat.).

Stichotaenia biforis ab. *brevifasciata*; Bechyné, 1948: 303 (key ab.); 1950a: 124; 1952: 46 (cat.).

Geographical distribution: Bechyné (1950a, 1952) recorded the species for Minas Gerais, Espírito Santo and Rio de Janeiro; Bechyné (1958) recorded it for São Paulo. New records for Paraná and Santa Catarina.

Type material: We examined photographs of the syntype of *P. biforis* (Figures 1F, 1G) from Brazil (ZMHB).

Material examined: BRAZIL. Minas Gerais: *Poços de Caldas*, 1 specimen, XI.1977, M. A. Monné leg. (MNRJ); 3 specimens, XII.1977, M. A. Monné leg. (MNRJ). Rio de Janeiro: *Angra dos Reis (Jussara)*, 1 specimen, I.1935, Dário Mendes leg. (MNRJ); *Itatiaia*, 1 specimen, 5.I.1925, J. F. Zikán leg. (FIOC); 1 specimen, 20.I.1925, J. F. Zikán leg. (FIOC); 1 specimen, XII.1928, J. F. Zikán leg. (FIOC); 1 specimen, 2.III.1931, J. F. Zikán leg. (FIOC); 1 specimen, XII.1932, B. Pohl leg. (MZSP); 2 specimens, XII.1936, B. Pohl leg. (MZSP); 1 specimen, I.XI.1942, illegible collector (MNRJ); 1 specimen, I.II.1947, H. Zellibor leg. (MNRJ); 1 specimen, I.XI.1947, 900m, H. Zellibor leg. (MNRJ); 1 specimen, XII.2004, 1250m, M. A. Monné, M. L. Monné & J. R. Mermudes leg. (MNRJ); *Rio de Janeiro*, 1 specimen, [no date and no collector] (MNRJ); *Santo Antônio de Pádua (Monte Alegre)*, 1 specimen, 24-30.XI.1942, F. Lane leg. (MZSP); *Teresópolis*, 1 specimen, 27.I.1957, D. Zajciw leg. (MNRJ). São Paulo: *Amparo*, 1 specimen, [no date and no collector] (MNRJ); *Bragança Paulista*, 3 specimens, 11.III.1994, S. Nesar & T. Olckers leg. (MZSP); *Campos do Jordão*, 1 specimen, 13-20. XI.1952, 1200m, D. Almeida, L. T. F. & Pd. Pereira leg. (MZSP); *Cantareira*, 1 specimen, 23.II.1936, [without collector] (MNRJ); 1 specimen, 23.X.1937, Zellibor-Hauff leg. (MNRJ); 1 specimen, 30.XI.1937, Zellibor-Hauff leg. (MNRJ); 1 specimen, 7.I.1941, H. Zellibor leg. (MNRJ); *Engenheiro Passos*, 1 specimen, 14.III.1994, S. Nesar & T. Olckers leg. (MZSP); *Jabaquara*, 1 specimen, 10.I.1934, H. Zellibor leg. (MNRJ); 1 specimen, 23.XII.1937, Zellibor-Hauff leg. (MNRJ); *Serra da Bocaina*, 1 specimen, IX.1956, Ary de Faria leg. (MNRJ). Paraná: *Guarapuava*, 1 specimen, I.1951, Dirings leg. (MZSP); *Rio Iguaçu*, 1 specimen, 20.IX.1986, M. A. Monné leg. (MNRJ); *São José dos Pinhais*, 2 specimens, IV.1980, O. Roppa & B. Silva leg. (MNRJ); *Irati*, 1 specimen, 26.X.1961, D. Zajciw leg. (MNRJ). Santa Catarina: *Corupá*, 1 specimen, XII.1937, A. Maller leg. (MNRJ); *Mafra*, 1 specimen, XII.1940, A. Maller leg. (MNRJ); 1 specimen, XI.1968, A. Maller leg. (MNRJ); 2 specimens, [no date and no collector] (MNRJ); *Rio Vermelho*, 1 specimen, X.1952, Dirings leg. (MZSP); 1 specimen, XII.1968, 800m, [without collector] (MNRJ); *São Bento do Sul (Lençol)*, 3 specimens, I.1925, without collector (MNRJ); *Seara (Nova Teutônia)*, 1 specimen, ♀, I.1941, B. Pohl leg. (MZSP); *Timbó*, 1 specimen, II.1951, Dirings leg. (MZSP).

***Platyphora bilimbata* (Stål, 1857)
(Figure 1H)**

Doryphora bilimbata Stål, 1857: 55; Gemminger & Harold, 1874: 3447 (cat.); Blackwelder, 1946: 668 (cat.).

Chrysomela bilimbata; Stål, 1863: 124.

Doryphora (Doryphora) bilimbata; Weise, 1916: 13 (cat.).

Stichotaenia bilimbata; Bechyné, 1950a: 130 (distr.); 1952: 47 (cat.); Zikán & Zikán, 1967: 132 (distr.).

Platyphora bilimbata; Bechyné & Bechyné, 1965: 100 (distr.); Sekerka, 2016 (check.).

Geographical distribution: Stål (1863) recorded the species for Rio de Janeiro; Bechyné (1950a) registered it for Espírito Santo and Zikán & Zikán (1967) recorded it for Minas Gerais. New records for Bahia, São Paulo and Paraná.

Material examined: BRAZIL. Bahia: 1♀, [no date], G. Bondar leg. (MNRJ). Espírito Santo: *Afonso Cláudio*, 1♂, 21.IX.1928, illegible collector (MNRJ); *Barra de São Francisco (Córrego do Itá)*, 1♂, 1-9.II.1957, J. H. Guimarães leg. (MNRJ); *Guandú*, 2♀, 20.XI.1920, F. Hoffmann leg. (MNRJ); *Rio Guandú*, 1♀, X.1920, F. Hoffmann leg. (MNRJ). Rio de Janeiro: *Itatiaia*, 1♀, X.1937, B. Pohl leg. (MZSP). São Paulo: *São Paulo (Ipiranga)*, 1♀, [no date and no collector] (MNRJ). Paraná: *Serra da Graciosa*, 1♀, XI.1941, B. Pohl leg. (MZSP).

***Platyphora bonvouloiri* (Stål, 1859)**

(Figures 1I-1K)

Doryphora bonvouloiri Stål, 1859: 307; Gemminger & Harold, 1874: 3447 (cat.); Blackwelder, 1946: 668 (cat.).

Chrysomela bonvouloiri; Stål, 1863: 134.

Doryphora (Doryphora) bonvouloiri; Weise, 1916: 13 (cat.).

Stichotaenia bonvouloiri; Bechyné, 1950a: 131 (distr.); 1951b: 63 (distr.); Zikán & Zikán, 1967: 132 (distr.).

Platyphora bonvouloiri; Bechyné, 1958: 534 (distr.); Sekerka, 2016 (check.).

Geographical distribution: Bechyné (1950a, 1951b) recorded the species for Rio de Janeiro.

Type material: We examined photographs of the holotype of *P. bonvouloiri* (Figures 1I-1K) from Brazil (Rio de Janeiro) (NHRS).

Material examined: BRAZIL. Rio de Janeiro: *Itatiaia (Fazenda Penedo)*, 1♂, 27.X.1942, Araújo leg. (MNRJ).

***Platyphora carolina* (Stål, 1858)**

(Figure 1L)

Doryphora carolina Stål, 1858: 470; Gemminger & Harold, 1874: 3447 (cat.); Blackwelder, 1946: 668 (cat.).

Chrysomela carolina; Stål, 1862: 85.

Doryphora (Doryphora) carolina; Weise, 1916: 13 (cat.).

Platyphora carolina; Sekerka, 2016 (check.).

Geographical distribution: Described from Brazil, with no specific location given. First accurate record for Rio de Janeiro (Itatiaia).

Material examined: BRAZIL. Rio de Janeiro: *Itatiaia*, 1♂ and 4♀, I.1961, Dirings leg. (MZSP); 1♂, [no date], Dirings leg. (MZSP).

***Platyphora congener* (Stål, 1858)**

(Figures 2A-2C)

Doryphora congener Stål, 1858: 470; Gemminger & Harold, 1874: 3448 (cat.); Blackwelder, 1946: 669 (cat.).

Chrysomela congener; Stål, 1862: 14.

Doryphora (Doryphora) congener; Weise, 1916: 14 (cat.).

Doryphorella (Histrionella) congener; Achard, 1922: 47 (key); Bechyné, 1946: 88 (key ab.).

Stichotaenia congener; Bechyné, 1952: 47 (cat.); 1954: 618 (distr.).

Platyphora congener; Bechyné & Bechyné, 1965: 90 (distr.); Sekerka, 2016 (check.); Flinte et al., 2017: 9, fig. 1G (check.).

Doryphora cliens Stål, 1858: 471; Gemminger & Harold, 1874: 3447 (cat.); Blackwelder, 1946: 669 (cat.); Sampaio & Monné, 2017: 1, figs. 1-3, 11-16 (syn., distr.).

Chrysomela cliens; Stål, 1862: 14.

Doryphora (Doryphora) cliens; Weise, 1916: 14 (cat.).

Doryphorella (Histrionella) cliens; Achard, 1922: 47 (key).

Stichotaenia cliens; Bechyné, 1952: 47 (cat.); Zikán & Zikán, 1967: 132 (distr.).

Platyphora cliens; Bechyné & Bechyné, 1965: 91 (distr.); Sekerka, 2016 (check.).

Geographical distribution: Bechyné (1952; 1954), and Bechyné & Bechyné (1965) recorded the species for Bahia, Rio de Janeiro, São Paulo, Paraná and Santa Catarina. Sampaio & Monné (2017) recorded it for Minas Gerais and Espírito Santo.

Type material: We examined photographs of the holotype of *P. congener* (Figures 2A-2C) from Brazil (NHRS).

Material examined: BRAZIL. Minas Gerais: 1 specimen, 5.X.1958, Sherlock leg. (MZSP). Espírito Santo: *Barra de São Francisco (Córrego do Itá)*, 4 specimens, XI.1981, H. W. Saar leg. (MNRJ); *Linhares*, 1 specimen, XII.1964, B. Silva leg. (MNRJ); 1 specimen, X.1968 (MNRJ); 1 specimen, XII.1968, B. Silva leg. (MNRJ); 2 specimens, IX.1970, B. Silva leg. (MNRJ); 1 specimen, X.1970, B. Silva leg. (MNRJ); 2 specimens, III.1972, B. Silva leg. (MNRJ); 1 specimen (MNRJ). Rio de Janeiro: *Rio de Janeiro*, (Corcovado), 1 specimen, IV.1933, Travassos leg. (MNRJ); (Alto da Boa Vista), 1 specimen, XII.1950, C. A. Campos Seabra leg. (MNRJ); (Corcovado), 1 specimen, 28.IX.1952, D. Zajciw leg. (MNRJ); (Corcovado), 1 specimen, 20.X.1952, D. Zajciw leg. (MNRJ); (Corcovado), 1 specimen, 28.X.1954, D. Zajciw leg. (MNRJ); (Corcovado), 4 specimens, XI.1955, D. Zajciw leg. (MNRJ); (Estrada das Paineiras), 1 specimen, 21.X.1956, C. A. Campos Seabra leg. (MNRJ); (Corcovado), 1 specimen, X.1971 (MNRJ); 1 specimen, A. Neiva leg. (MNRJ); 1 specimen, Costa Lima leg. (MNRJ); *Itatiaia*, 1 specimen, 26.X.1926, J. F. Zikán leg. (FIOC); 1 specimen, 15.XI.1942 (MNRJ); (Parque Nacional do Itatiaia), 800m, 2 specimens, 5-25.XI.1974, H. S. & M. A. Monné leg. (MNRJ); 1250m, 1 specimen, 26-30.XII.2008, M. L. Monné & M. A. Monné leg. (MNRJ); 1250m, 2 specimens, 1-4.X.2009, M. L. Monné, J. R. Mermudes & M. A. Monné leg. (MNRJ). São Paulo: *São Paulo*, (Cantareira), 1 specimen, 7.I.1934, H. Zellibor leg. (MNRJ); (Horto Florestal), 1 specimen, III.1935, Travassos leg. (MNRJ); 1 specimen, 10.III.1936, H. Zellibor leg. (MNRJ); (Cantareira), 1 specimen, 10.I.1937, H. Zellibor leg. (MNRJ); (Serra da Cantareira), 1 specimen, 9.XI.1946, F. Lane leg. (MZSP); 1 specimen, 29.XII.1951, G. H. Nick leg. (ZSMC); (Água Funda), 1 specimen, 8.II.1967, H. Reichardt leg. (MZSP); *Amparo*, 1 specimen (MNRJ). Santa Catarina: *Corupá*, 1 specimen (MNRJ); *Timbó*, 1 specimen, XI.1954, Dirings leg. (MZSP).

***Platyphora conviva* (Stål, 1858)**

(Figures 2D-2F)

Doryphora conviva Stål, 1858: 255; Gemminger & Harold, 1874: 3448 (cat.); Blackwelder, 1946: 669 (cat.).

Chrysomela conviva; Stål, 1863: 92.

Doryphora (Doryphora) conviva; Weise, 1916: 14 (cat.).

Stichotaenia conviva; Bechyné, 1948: 304; 1952: 47 (cat.); Zikán & Zikán, 1967: 132 (distr.).

Stichotaenia conviva ab. conviva; Bechyné, 1948: 304 (key ab.).

Platyphora conviva; Bechyné, 1958: 533 (distr.); Vasconcellos-Neto & Jolivet, 1988: 295-296, figs. 4-6 (biol.); Jolivet et al., 1990: 134, figs. 5, 6 (biol.); Olcker, 1999: 69 (biol.); 2000: 497, 498, 499, 504, 505, 507 (biol.); Beenen, 2005: 182 (biol.); Santiago-Blay et al., 2012: 332, 333, 336, fig. 18a (biol.); Windsor et al., 2013: 74, 79; Chaboo et al., 2014: 19; Dury et al., 2014: 3 (biol.); Sekerka, 2016 (check.); Flinte et al., 2017: 9 (check.).

Doryphora sexspilota Jacoby, 1903: 36.

Stichotaenia conviva ab. sexspilota; Bechyné, 1948: 304 (key ab.); 1952: 47 (cat.).

Geographical distribution: Bechyné (1952, 1958) recorded the species for Rio de Janeiro and São Paulo. New record for Minas Gerais.

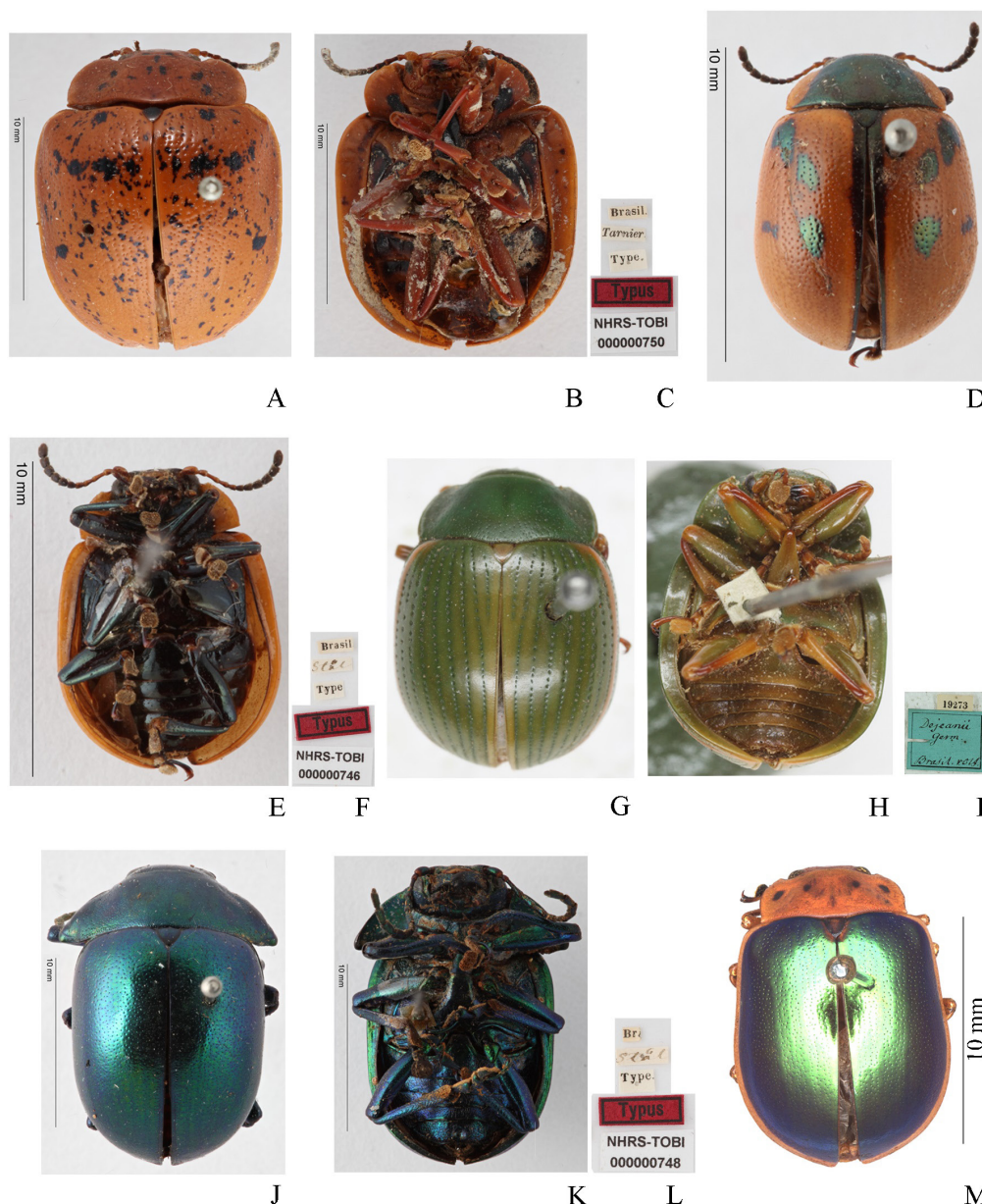


Figure 2. A-C, holotype of *Platyphora congener* (Stål, 1858), A, dorsal view, B, ventral view, C, labels; D-F, holotype of *Platyphora conviva* (Stål, 1858), D, dorsal view, E, ventral view, F, labels; G-I, syntype of *Platyphora dejeani* (Germar, 1823), G, dorsal view, H, ventral view, I, labels; J-L, holotype of *Platyphora dilaticollis* (Stål, 1858), J, dorsal view, K, ventral view, L, labels; M, dorsal view of *Platyphora fervida fervida* (Fabricius, 1775). Figs. G-I © J. Willers/ZMHB. Figs. A-F, J-L photographed by J. Bergsten (© 2016 Naturhistoriska Riksmuseet). Made available by the Swedish Museum of Natural History under Creative Commons Attribution 4.0 International Public License, CC-BY 4.0, <https://creativecommons.org/licenses/by/4.0/legalcode>.

Type material: We examined photographs of the holotype of *P. conviva* (Figures 2D-2F) from Brazil (NHRS).

Material examined: Minas Gerais: *Poços de Caldas (Morro do Ferro)*, 1 specimen, I.1977, M. A. Monné leg. (MNRJ). Rio de Janeiro: *Itatiaia*, 1 specimen, I.XII.1925, 1100m, J. F. Zikán leg. (FIOC); 1 specimen, XII.1933, 800m, S. Lopes & R. Cunha leg. (MNRJ); 2 specimens, 26.XII.1953, 1200m, Seabra & Alvarenga leg. (MNRJ); 1 specimen, 6.I.1954, 1100m, W. Zikán leg. (MNRJ); 1 specimen, 7.I.1954, 1200m, C. A. C. Seabra, W. Zikán, L. C. & M. Alvarenga leg. (MNRJ); 3 specimens, II.1966, Dirings leg. (MZSP); 1 specimen, II.1967, Dirings leg. (MZSP); 2 specimens, 26.XII.2001, 1200m, M. L. Monné & M. A. Monné leg. (MNRJ); 1 specimen, 22-26.XII.2007, 1250m, J. R. Mermudes, M. L. Monné

& M. A. Monné leg. (MNRJ); 1 specimen, 26-30.XII.2008, 1250m, M. L. Monné & M. A. Monné leg. (MNRJ); 1 specimen, 1-4.X.2009, 750m, M. L. Monné, J. R. Mermudes & M. A. Monné leg. (MNRJ); 1 specimen, 13-16.X.2011, J. P. Botero, V. Machado, M. Simões, A. Aragão & R. Souza leg. (MNRJ). São Paulo: *Cantareira*, 1 specimen, 10.XI.1935, H. Zellibor leg. (MNRJ); 1 specimen, 7.XII.1937, H. Zellibor leg. (MNRJ); 1 specimen, 10.XI.1940, H. Zellibor leg. (MNRJ); 1 specimen, I.1953, 1000m, G. H. Nick leg. (ZSMC); *São Paulo (Instituto Florestal)*, 1 specimen, 1991, E. P. Teixeira leg. (MZSP).

***Platyphora dejeani* (Germar, 1823)**
(Figures 2G-2I)

Doryphora dejeani Germar, 1823: 580; Sturm, 1826: 133; 1843: 286; Dejean, 1833: 396; 1837: 420; Gemminger & Harold, 1874: 3448 (cat.); Blackwelder, 1946: 669 (cat.).

Chrysomela dejeani; Stål, 1863: 122.

Doryphora (Doryphora) dejeani; Weise, 1916: 15 (cat.).

Stichotaenia dejeani; Bechyné, 1950a: 130 (distr.); 1952: 48 (cat.); 1954: 657 (distr.); Zikán & Zikán, 1967: 132 (distr.).

Platyphora (Doryprosopa) dejeani; Monrós & Bechyné, 1956: 1129.

Platyphora dejeani; Bechyné & Bechyné, 1965: 100 (distr.); Sekerka, 2016 (check.); Flinte et al., 2017: 10, fig. 11 (check.).

Geographical distribution: Stål (1863) recorded the species for Rio de Janeiro; Bechyné (1950a, 1952), and Bechyné & Bechyné (1965) recorded it for Amazonas, Goiás and São Paulo. New records for Bahia, Minas Gerais and Espírito Santo.

Type material: We examined photographs of the holotype of *P. dejeani* (Figures 2G-2I) from Brazil (ZMHB).

Material examined: Bahia: 1♀, [no date], G. Bondar leg. (MNRJ). Minas Gerais: *Manhumirim*, 1♂, 4.I.1937 [without collector]. (MNRJ). Espírito Santo: *Colatina*, 1♂, 15.X.1936 [without collector] (MNRJ); *Barra de São Francisco (Córrego do Itá)*, 5♀, XI.1981, H. W. Saar leg. (MNRJ). Rio de Janeiro: *Angra dos Reis (Jussara)*, 1♀, IX.1934, D. Mendes leg. (MNRJ); *Itatiaia*, 1♂, 14.I.1958, D. Zajciw leg. (MNRJ); 1♀, XI.1929, 700m, J. F. Zikán leg. (FIOC); 2♀, 1.II.1944, 900m, H. Zellibor leg. (MNRJ); *Rio de Janeiro*, 1♀, IV.1925 (Estrada das Paineiras), M. Mello leg. (MNRJ); 1♀, 12.X.1925 (Gávea), E. M. M. Melo leg. (MNRJ); 1♀, 25.III.1937, M. Alvarenga leg. (MNRJ); 1♀, 25.III.1951, M. Alvarenga leg. (MNRJ); 1♀, 17.X.1956 (Estrada das Paineiras), A. C. Campos Seabra leg. (MNRJ); 1♀, IV.1962 (Floresta dos Macacos), A. B. Pereira leg. (MNRJ); 1♂, 12.VIII.1968 (Corcovado), Wygodzinsky leg. (MNRJ); 1♂, VII.1969 (Represa Rio Grande), F. M. Oliveira leg. (MNRJ); 1♀ (Jardim Botânico), [no date], Azevedo Marques leg. (MNRJ); 1♂ and 1♀, [no date], Carlos Lima leg. (MNRJ); 1♂ and 1♀, [no date], Neiva leg. (MNRJ); 1♂, [no date and no collector] (NHMW); *Serra Macaé*, 1♀, [no date], illegible collector (MNRJ); *Teresópolis*, 1♀, 1.II.1960, D. Zajciw leg. (MNRJ).

***Platyphora dilaticollis* (Stål, 1858)**

(Figures 2J-2L)

Doryphora dilaticollis Stål, 1858: 254; Gemminger & Harold, 1874: 3448 (cat.); Blackwelder, 1946: 669 (cat.).

Chrysomela dilaticollis; Stål, 1863: 130.

Doryphora (Doryphora) dilaticollis; Weise, 1916 (cat.): 15.

Stichotaenia dilaticollis; Bechyné, 1950a: 130 (distr.); 1952: 48 (distr.); Zikán & Zikán, 1967: 132 (distr.).

Platyphora dilaticollis; Sekerka, 2016 (check.); Flinte et al., 2017: 10 (check.).

Doryphora dilaticollis Baly, 1859: 55.

Chrysomela dilaticollis var. *a*; Stål, 1863: 130.

Geographical distribution: Bechyné (1950a, 1952) recorded the species for Minas Gerais, Rio de Janeiro and São Paulo.

Type material: We examined photographs of the holotype of *P. dilaticollis* (Figures 2J-2L) from Brazil (NHRS).

Material examined: BRAZIL. Minas Gerais: *Juiz de Fora*, 1♀, I.1981, G. S. Andrade leg. (MNRJ); *Manhumirim*: 1♀, 30.III.1937, Zellibor-Hauff leg. (MNRJ). Rio de Janeiro: *Itaperuna*, 1♀, VI.1944, Hilton leg. (MNRJ); *Itatiaia*, 3♀, 31.XII.1936, J. F. Zikán leg. (FIOC); 1♀, 5-26.XI.1974, 800m, H. S. Monné & M. A. Monné leg. (MNRJ); 1♀, [no date], Gentil P. Machado leg. (FIOC); *Petrópolis*, 1♂, 10.II.1943, Dice leg. (MNRJ). São Paulo: *Amparo*, 1♀, [no date and no collector] (MNRJ); *Cantareira*, 1♂, 7.XII.1935, [without collector] (MNRJ); *Jundiaí*, 1♀, [no date], M. Beron leg. (MNRJ); *Tremembé*, 1♀, 26.XI.1933, [without collector] (MNRJ).

***Platyphora fervida fervida* (Fabricius, 1775)**

(Figure 2M)

Chrysomela fervida Fabricius, 1775: 97; 1781: 119; 1787: 69; 1792: 317; 1801: 434; Olivier, 1790: 699; Illiger, 1806: 229; Stål, 1862: 82.

Doryphora fervida; Olivier, 1807: 516; Dejean, 1837: 420; Gemminger & Harold, 1874: 3449 (cat.); Blackwelder, 1946: 669 (cat.).

Doryphora (Doryphora) fervida; Weise, 1916: 16 (cat.).

Stichotaenia fervida; Bechyné, 1950a: 122 (key ab.); 1951a: 77 (distr.); 1951b: 63 (distr.); 1952: 48 (cat.); 1953: 5 (distr.); 1954: 653 (distr.); Zikán & Zikán, 1967: 132 (distr.); Buzzi, 1977: 83, 84, 86 (biol.); 1979: 47 (biol.).

Stichotaenia fervida fervida; Bechyné, 1950a: 123 (key ab.); 1953: 5 (distr.); 1954: 653 (distr.); Buzzi, 1977: 83 (biol.).

Platyphora fervida fervida; Sekerka, 2016 (check.).

Platyphora fervida; Flinte et al., 2009: 38, 45, 46, 50, 51 (biol.); 2017: 10, fig. 1L (check.).

Doryphora cincta Germar, 1821: 175; Motschulsky, 1860: 183; Gemminger & Harold, 1874: 3447 (cat.); Blackwelder, 1946: 668 (cat.).

Linostoma cincta; Motschulsky, 1860: 183.

Chrysomela cincta; Stål, 1862: 82; 1865: 344.

Doryphora (Doryphora) cincta; Weise, 1916: 14 (cat.).

Stichotaenia fervida ab. *cincta*; Bechyné, 1950a: 123 (key ab.); 1952: 48 (cat.); 1953: 5 (distr.).

Stichotaenia cincta; Zikán & Zikán, 1967: 132 (distr.).

Platyphora cincta; Flinte et al., 2017: 10 (check.).

Doryphora cinctipennis Stål, 1857: 56.

Chrysomela cincta var. *c*; Stål, 1862: 83.

Doryphora cincta var. *cinctipennis*; Gemminger & Harold, 1874: 3447 (cat.).

Doryphora (Doryphora) cincta ab. *cinctipennis*; Weise, 1916: 14 (cat.).

Doryphora cincta ab. *cinctipennis*; Blackwelder, 1946: 668 (cat.).

Stichotaenia fervida ab. *cinctipennis*; Bechyné, 1950a: 123 (key ab.); 1952: 48 (cat.); 1953: 5 (distr.).

Doryphora ochroloma Stål, 1857: 56.

Chrysomela fervida var. *b*; Stål, 1862: 82.

Doryphora (Doryphora) fervida ab. *ochroloma*; Weise, 1916: 16 (cat.).

Doryphora fervida ab. *ochroloma*; Blackwelder, 1946: 669 (cat.).

Stichotaenia fervida ab. *ochroloma*; Bechyné, 1950a: 123 (key ab.); 1952: 48 (cat.); 1953: 5 (distr.).

Doryphora scutellaris Stål, 1858: 255; Gemminger & Harold, 1874: 3453 (cat.).

Chrysomela scutellaris; Stål, 1862: 83.

Stichotaenia fervida ab. *scutellaris*; Bechyné, 1950a: 123 (key ab.); 1952: 48 (cat.); 1953: 5 (distr.).

Geographical distribution: Bechyné (1952) recorded the species for Brazil (Minas Gerais, Rio de Janeiro, São Paulo, Paraná, Santa Catarina and Rio Grande do Sul), Paraguay and Argentina (Misiones).

Material examined: BRAZIL. Minas Gerais: *Cambuquira*, 1♂, [no date and no collector] (MNRJ); *Itajuba*, 3♀, X.1981, M. A. Monné leg. (MNRJ); *Lambari*, 1♂, [no date], Azevedo Marques leg. (MNRJ); *Passa Quatro*, 1♂, 23.X.1916, [without collector] (MNRJ); 1♀, 27.X.1916, illegible collector (MNRJ); 1♂, 9.III.1920, Zikán leg. (MNRJ); 1♂, 14.II.1922, J. Zikán leg. (MNRJ); *Rio Claro*, 2♂, 1947, Carvalho leg. (MNRJ); *Viçosa*, 1♂, XII.1944, Wygodzinsky leg. (MNRJ); *Virginia*, 2♀, 8.XII.1919, 1500m, J. Zikán leg. (MNRJ). Rio de Janeiro: *Itatiaia*, 1♂ and 1♀, II.1922, D. Mendes leg. (MNRJ); 1♂ and 1♀, 4.I.1925, J. F. Zikán leg. (FIOC); 1♂, 6.XII.1925, J. F. Zikán leg. (FIOC); 2♀, IX.1929, D. Mendes leg. (MNRJ); 1♀, 5.XI.1932, W. Zikán leg. (MNRJ); 1♂ and 1♀, 17.XI.1932, 1100m, W. Zikán leg. (MNRJ); 1♀, 31.X.1940, J. F. Zikán leg. (FIOC); 1♂ and 1♀, 30.XI.1942, 1100m, W. Zikán leg. (MNRJ); 1♂, I.1959, J. Guimarães leg. (MNRJ); 1♂, XI.1959, W. Zikán leg. (MNRJ); 1♂, 26.I.2012, 1381m, Mermudes & Mattos leg. (DZRJ); *Nova Friburgo (Muri)*, 1♂, 4.XII.1977, M. A. Monné leg. (MNRJ); *Serra dos Órgãos*, 1♂ and 1♀, XII.1940, Parko leg. (MNRJ); 1♂, 14-22.IV.1947, 1600-1700m,

Wygodzinsky leg. (MNRJ); *Teresópolis*, 1♀, V.1919, Carlos Moreira leg. (MNRJ); 2♂, 25.I.1957, D. Zajciw leg. (MNRJ); 1♂ and 1♀, 2.XII.1959, D. Zajciw leg. (MNRJ); 1♂, 1.II.1960, D. Zajciw leg. (MNRJ); 3♂ and 1♀, 02. VI.1965, A. Peracchi leg. (MNRJ); 2♂ and 2♀, [no date], Carlos Moreira leg. (MNRJ); 2♂ and 1♀, [no date], P. Schirch leg. (MNRJ). São Paulo: *Amparo*, 3♂ and 1♀, [no date and no collector] (MNRJ); *Bananal*, 10♂ and 4♀, I.1937, D. Mendes leg. (MNRJ); *Cantareira*, 1♀, 31.X.1931, [without collector] (MNRJ); 1♂, 10.XI.1934, H. Zellibor leg. (MNRJ); *Campos do Jordão*, 1♂, XI.1944, [without collector] (MNRJ); 4♂ and 3♀, III.1945, 1600m, Wygodzinsky leg. (MNRJ); *Engenheiro Coelho*, 1♀, XII.1920, A. Richter leg. (MNRJ); *Santo André (Paranapiacaba)*, 1♀, [no date and no collector] (MNRJ); *Santo Antônio do Pinhal (Eugênio Lefèvre)*, 1♂, 1.XI.1997, Lopes & Oiticica leg. (MNRJ); *Serra da Bocaina*, 1♂, V.1951, Dalcly Machado leg. (MNRJ); 3♂ and 1♀, IX.1956, Ary de Faria leg. (MNRJ); *Ubatuba*, 1♂, 16.XII.1955, Ebenezer leg. (MNRJ); 1♂, 6.II.1956, Ebenezer leg. (MNRJ); 1♂ and 1♀, 10.III.1956, Ebenezer leg. (MNRJ); 1♂, 16.III.1956, Ebenezer leg. (MNRJ); 1♂, 19.III.1956, Ebenezer leg. (MNRJ); 1♂, 20.IV.1956, Ebenezer leg. (MNRJ); 2♂ and 1♀, 30.IV.1956, Ebenezer leg. (MNRJ); 1♂, 4.V.1956, Ebenezer leg. (MNRJ); 1♂, 5.V.1956, Ebenezer leg. (MNRJ). Paraná: *Arapongas*, 1♀ and 1♂, II.1952, A. Maller leg. (MNRJ); *Rio Negro*, 1♀, 2.I.1924, M. Wille leg. (MNRJ); 1♀, 22.XI.1924, M. Wille leg. (MNRJ). Santa Catarina: *Blumenau*, 1♂, 1993, illegible collector (MNRJ); *Corupá*, 2♂, II.1952, A. Maller leg. (MNRJ); 1♀, XI.1953, A. Maller leg. (MNRJ); 1♀, XI.1956, A. Maller leg. (MNRJ); *Joinville*, 1♂ and 1♀, XII.1928, illegible collector (MNRJ); *Mafrá*, 1♂, III.1938, A. Maller leg. (MNRJ); 2♂ [no date and no collector] (MNRJ); 1♀, [no date and no collector] (ZSMC); *Pinhal*, 3♂ and 1♀, XII.1951, A. Maller leg. (MNRJ); 1♂ and 1♀, III.1952, A. Maller leg. (MNRJ); 2♂ and 1♀, XII.1952, A. Maller leg. (MNRJ); *São Bento*, 3♂, 1921, J. Nadera leg. (MNRJ); 1♂, II.1953, A. Maller leg. (MNRJ); 1♂, I.1956 (Rio Natal), A. Maller leg. (MNRJ).

***Platyphora figurata* (Germar, 1823)**

(Figures 3A-3C)

Doryphora figurata Germar, 1823: 579; Dejean, 1833: 396; 1837: 420; Sturm, 1843: 287; Motschulsky, 1860: 183; Gemminger & Harold, 1874: 3449 (cat.); Blackwelder, 1946: 669 (cat.).

Biogramma figurata; Motschulsky, 1860: 183.

Chrysomela figurata; Stål, 1862: 33.

Doryphora (Doryphora) figurata; Weise, 1916: 16 (cat.).

Stichotaenia figurata; Bechyné, 1950a: 119 (distr.); 1952: 49 (cat.); 1954: 653 (distr.); Zikán & Zikán, 1967: 132 (distr.).

Platyphora figurata; Bechyné & Bechyné, 1965: 92 (distr.); Sekerka, 2016 (check.); Flinte et al., 2017: 10 (check.).

Geographical distribution: Bechyné (1950a, 1952, 1954) and Bechyné & Bechyné (1965) recorded the species for Bahia, Rio de Janeiro, São Paulo and Santa Catarina.

Type material: We examined photographs of the syntype of *P. figurata* (Figures 3A-3C) from Brazil (ZMHB).

Material examined: BRAZIL. Bahia: 1♂, [no date], G. Bondar leg. (MNRJ). Rio de Janeiro: *Itaguaí (Serra da Caveira)*, 1♂, 25.II.1948, W. Zikán leg. (MNRJ); *Itatiaia*, 1♂, 7. II. 1944, W. Zikán leg. (FIOC); 1♀, 30.X.2008, 1250m, M. L. Monné & M. A. Monné leg. (MNRJ); 1♀, 1-4.X.2009, 1250m, M. L. Monné, J. R. Mermudes & M. A. Monné leg. (MNRJ); *Rio de Janeiro*, 1♀, 10.XI.1918, Silvestre leg. (MNRJ); 1♂, XI.1932, Dário leg. (MNRJ); 1♂, 10.IV.1953 (Corcovado), D. Zajciw leg. (MNRJ); 1♂, 20.X.1954 (Corcovado), D. Zajciw leg. (MNRJ); 1♂, 28.X.1954 (Corcovado), D. Zajciw leg. (MNRJ); 1♂, I.XI.1954 (Corcovado), D. Zajciw leg. (MNRJ); 3♂, XII.1956 (Corcovado), D. Zajciw leg. (MNRJ); 1♀, 21.VIII.1958 (Corcovado), Alvarenga & Seabra leg. (MNRJ); 1♀, 27.X.1975 (Corcovado), M. A. Monné & C. A. Campos Seabra leg. (MNRJ); 2♂ and 1♀, 30.X.1975 (Corcovado), M. A. Monné & C. A. Campos Seabra leg. (MNRJ); 3♂, 8.XI.1975 (Corcovado), M. A. Monné & C. A. Campos Seabra

leg. (MNRJ); 1♂, 10.XI.1975 (Corcovado), M. A. Monné & C. A. Campos Seabra leg. (MNRJ). São Paulo: *Angatuba*, 2♀, III.1921, Marques leg. (MNRJ); *Cantareira*, 2♂, 23.X.1937, Zellibor-Hauff leg. (MNRJ); *Cubatão*, 1♀, 30.IX.1937, Zellibor-Hauff leg. (MNRJ); *Guarujá*, 1♀, 1.XI.1930, Melo leg. (MNRJ); *Peruíbe*, 1♂, 7.I.1938, Zellibor-Hauff leg. (MNRJ); *São Paulo*, 1♂, 1905, [without collector] (MNRJ). Santa Catarina: *Corupá*, 1♂, X.1937, A. Maller leg. (MNRJ); 1♂, [no date and no collector] (MNRJ); *São Francisco*, 1♀, [no date and no collector] (MNRJ).

***Platyphora fraterna* (Stål, 1857)**

(Figures 3D-3J, 4A)

Doryphora fraterna Stål, 1857: 55; Gemminger & Harold, 1874: 3449 (cat.); Blackwelder, 1946: 669 (cat.).

Chrysomela fraterna; Stål, 1863: 90.

Doryphora (Doryphora) fraterna; Weise, 1916: 17 (cat.).

Stichotaenia fraterna; Bechyné, 1951a: 78 (distr.); 1952: 49 (cat.); Zikán & Zikán, 1967: 132 (distr.).

Platyphora fraterna; Bechyné, 1958: 533 (distr.); Morgado et al., 2009: 1, 2; Sekerka, 2016 (check.); Flinte et al., 2017: 10, fig. 1N (check.).

Doryphora fasciatomaculata Stål, 1857: 57; Gemminger & Harold, 1874: 3449 (cat.); Blackwelder, 1946: 669 (cat.). **Syn. nov.**

Doryphora (Doryphora) fasciatomaculata; Weise, 1916: 16 (cat.).

Stichotaenia fasciatomaculata; Bechyné, 1952: 48 (cat.); 1953: 6 (distr.), 16; 1954: 654 (distr.); Zikán & Zikán, 1967: 132 (distr.).

Platyphora fasciatomaculata; Schroder et al., 1994: 237, 238 (biol.); Medal et al., 2000: 629 (host); Moura & Grazia, 2011: 620 (biol.); Santiago-Blay et al., 2012: 337 (host); Windsor et al., 2013: 74 (host); Chaboo et al., 2014: 19; Dury et al., 2014: 3; Sekerka, 2016 (check.); Flinte et al., 2017: 10, fig. 1K (check.).

Doryphora maculosa Stål, 1858: 255.

Chrysomela fraterna var. *b*; Stål, 1863: 90.

Doryphora fraterna var. *maculosa*; Gemminger & Harold, 1874: 3449 (cat.).

Doryphora (Doryphora) fraterna ab. *maculosa*; Weise, 1916: 17 (cat.).

Doryphora fraterna ab. *maculosa*; Blackwelder, 1946: 669 (cat.).

Stichotaenia fraterna ab. *maculosa*; Bechyné, 1950a: 123 (distr.); 1951a: 78 (distr.); 1952: 49 (cat.).

Chrysomela avara Stål, 1863: 92 (syn.).

The original descriptions of *Doryphora fraterna* Stål, 1857 and *Doryphora fasciatomaculata* Stål, 1857 are very similar, and only some differences were related to the color of the dorsum. Comparisons of photographs of the syntypes of *D. fraterna* (Figures 3D-3I) and of the holotype of *D. fasciatomaculata* (Figures 3K-3M), and the comparative examination of 77 specimens helped us to determine that the differences between these taxa are due only to intraspecific variation (Figures 3D-4A). Also, the male genitalia of specimens from various localities (Minas Gerais, Rio de Janeiro, São Paulo, Santa Catarina and Rio Grande do Sul) were dissected and no differences were observed. Therefore, *Doryphora fasciatomaculata* is here considered a synonym of *Doryphora fraterna*.

Geographical distribution: Bechyné (1950a, 1951a, 1952, 1953, 1954, 1958) recorded the species for Brazil (Minas Gerais, Rio de Janeiro, São Paulo and Santa Catarina) and Argentina (Misiones). New records for Espírito Santo and Rio Grande do Sul.

Type material: We examined photographs of the syntypes of *P. fraterna* (Figures 3D-3I) from Brazil (Rio de Janeiro) and the holotype of *P. fasciatomaculata* (Figures 3K-3M) from Brazil taken by Dr Johannes Bergsten (NHRS).

Material examined: BRAZIL. Minas Gerais: *Cataguases*, 1♂ and 3♀, IV.1927, Caldeiras leg. (MNRJ); *Juiz de Fora*, 1♂ and 1♀, I.1981, G. S. Andrade leg. (MNRJ); *Nanuque (Mairinque)*, 1♀, 2.I.1934, [without collector] (MNRJ); *Passa Quatro*, 1♀, II.1915, illegible collector (MNRJ). Espírito Santo: *Fazenda Jerusalém*, 1♀, 15.X.1913, J. F. Zikán leg. (MNRJ). Rio de Janeiro: *Itatiaia*, 1♀, 7.X.1923, 700m, J. F. Zikán leg. (FIOC);

Platyphora from Itatiaia National Park

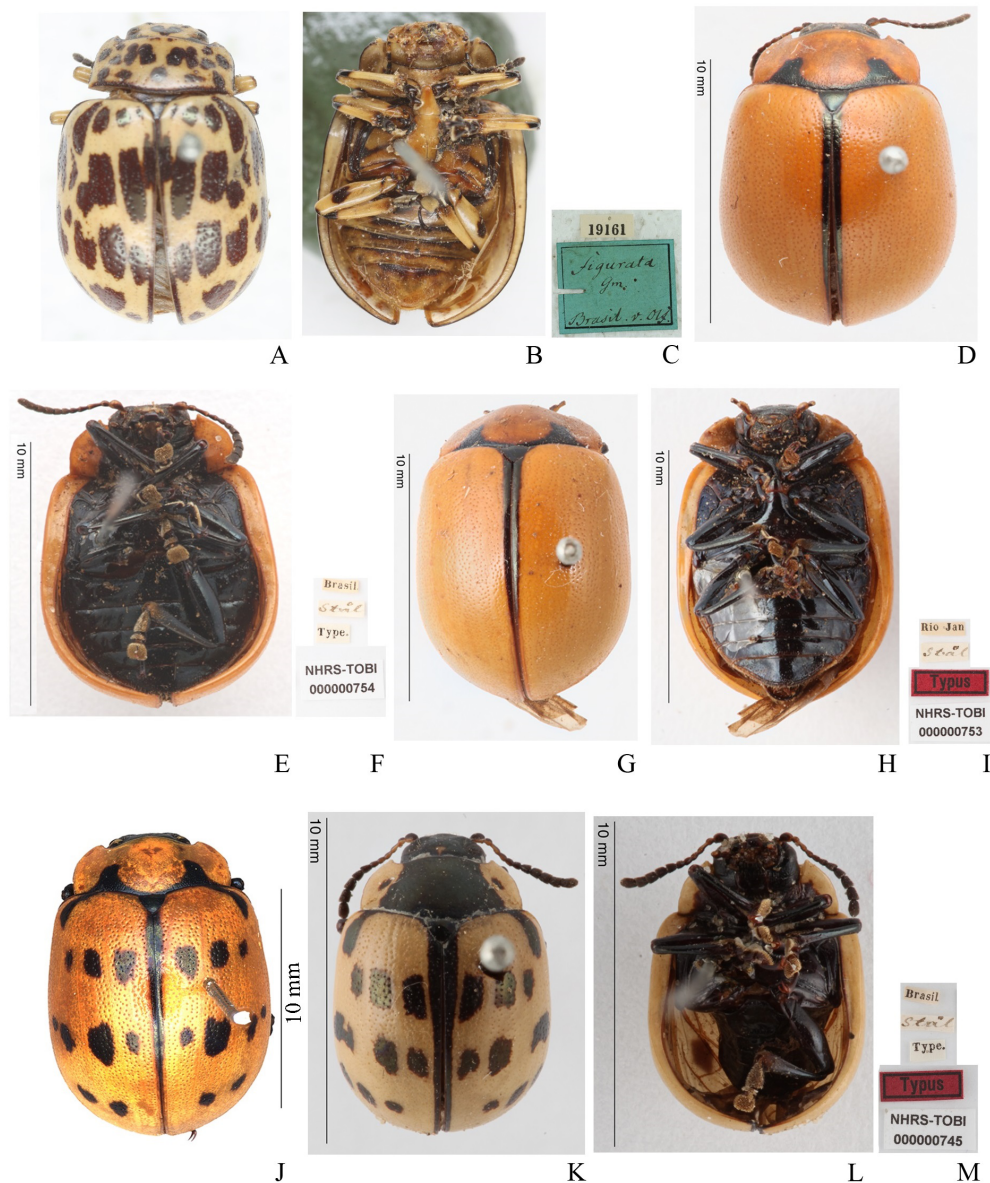


Figure 3. A-C, syntype of *Platyphora figurata* (Germar, 1823), A, dorsal view, B, ventral view, C, labels; D-I, syntypes of *Platyphora fraterna* (Stål, 1857), D, dorsal view, E, ventral view, F, labels, G, dorsal view, H, ventral view, I, labels; J, dorsal view of *Platyphora fraterna*; K-M, holotype of *Platyphora fasciatomaculata* (Stål, 1857), K, dorsal view, L, ventral view, M, labels. Figs. A-C © J. Willers/ZMHB. Figs. D-I, K-M photographed by J. Bergsten (© 2016 Naturhistoriska Riksmuseet). Made available by the Swedish Museum of Natural History under Creative Commons Attribution 4.0 International Public License, CC-BY 4.0, <https://creativecommons.org/licenses/by/4.0/legalcode>.

1♀, 12.XI.1924, J. F. Zikán leg. (FIOC); 1♂ and 1♀, 4.I.1925, J. F. Zikán leg. (MNRJ); 1♀, 27.I.1930, 700m, Zikán leg. (MNRJ); 1♀, X.1954, 830m, L. Zikán leg. (MNRJ); 1♀, 19.IX.1956, W. Zikán leg. (MNRJ); 1♀, II.1967, Dirings leg. (MZSP); 1♂, 26.XII.2001, 1200m, Marcela & Miguel Monné leg. (MNRJ); 1♂, 15-17.XI.2007, 700m, M. L. Monné, M. Simões & H. Quintino leg. (MNRJ); 1♂, 11-14.I.2008, M. L. Monné, J. R. Mermudes, H. S. Monné & M. A. Monné leg. (MNRJ); 1♀, 26-30.XII.2008, M. L. & M. A. Monné leg. (MNRJ); 1♀, 22-24.I.2010, M. L., H. S. & M. A. Monné leg. (MNRJ); *Nova Friburgo*, 1♀, XII.1970, F. M. Oliveira leg. (MNRJ); *Petrópolis*, 1♂, XII. 1913, Carlos Moreira leg. (MNRJ); *Rio de Janeiro*, 1♂, 10.VI.1912 (Pedregulho), Azevedo Marques leg. (MNRJ); 2♀, [no date and no collector] (NHMW); *Serra Macaé*, 1♂, [no date and no collector] (MNRJ); *Teresópolis*, 1♂, 13-16.

XII.1957, Seabra & Alvarenga leg. (UFPR). São Paulo: *Cantareira*, 1♀, 1.X.1934, H. Zellibor leg. (MNRJ); 1♀, 1.XI.1936, H. Zellibor leg. (MNRJ); *São Paulo*, 2♀, 19.X.1915, illegible collector (MNRJ); 1♀, 7.XI.1926 (Matto do Governo), illegible collector (MNRJ); 1♂, 5.X.1929 (Matto do Governo), illegible collector (MNRJ); 1♀, 15.XI.1929, illegible collector (MNRJ); 1♂, 20.X.1931 (M. do Governo), J. Melzer leg. (MNRJ); 3♂ and 2♀, 24.X.1931 (M. do Governo), J. Melzer leg. (MNRJ); 1♂, 1.XI.1931 (M. do Governo), J. Melzer leg. (MNRJ); 1♂, 21.XI.1931 (M. do Governo), J. Melzer leg. (MNRJ); 1♂ and 1♀, 29.XI.1931 (M. do Governo), J. Melzer leg. (MNRJ); 1♂ and 1♀, 19.XII.1931 (M. do Governo), J. Melzer leg. (MNRJ); 1♂ (Instituto Florestal), 1.XII.1989, E. P. Teixeira leg. (MZSP); *Santos*, 1♀, XI.1915, [without collector] (MNRJ). Paraná: *Pedreira*, 1♂, XI.1944, [without collector] (UFPR); *Ponta Grossa*, 1♂, IX.1942,

[without collector] (UFPR); 1♂, 1942, [without collector] (UFPR). Santa Catarina: *Corupá*, 1♀, X.1937, A. Maller leg. (MNRJ); 1♂, XI.1953, A. Maller leg. (MNRJ); 1♀, II.1966, [without collector] (UFPR); 1♂, XII.1967, [without collector] (MNRJ); *Pinhal*, 1♂, IV.1953, A. Maller leg. (MNRJ); *Rio Vermelho*, 1♀, XII.1964, [without collector] (UFPR); *Seara (Nova Teutônia)*, 2♀, 10.IX.1933 [without collector] (MNRJ); 1♂, 24.IX.1951, F. Plaumann leg. (UFPR); 1♀, 1.X.1951, F. Plaumann leg. (MNRJ); 1♀, XI.1980, Fritz Plaumann leg. (UFPR). Rio Grande do Sul: *Cruz Alta*, 1♀ (ZSMC) [no date], Fr. Martin leg.; *Marcelino Ramos*, 1♀, 21.IX.1939, [without collector] (UFPR); *Santo Augusto*, 1♂, IX.1958, O. Roppa leg. (MNRJ).

***Platyphora fulvovittata* (Bechyné, 1948)**

(Figures 4B-4D)

Stichotaenia fulvovittata Bechyné, 1948: 304; 1950a: 130 (distr.); 1952: 49 (cat.); 1954: Table XXX, fig. 15; Zikán & Zikán, 1967: 132 (distr.).

Platyphora fulvovittata; Sekerka, 2016 (check.).

Doryphora flavovittata Stål, 1858: 257; Gemminger & Harold, 1874: 3449 (cat.); Blackwelder, 1946: 669 (cat.).

Chrysomela flavovittata; Stål, 1863: 129.

Doryphora (Doryphora) flavovittata; Weise, 1916: 17 (cat.).

Doryphorella flavovittata; Bechyné, 1946: 89.

Stichotaenia flavovittata; Bechyné, 1948: 304; Zikán & Zikán, 1967: 132 (distr.).

Platyphora flavovittata; Sekerka, 2016 (check.); Flinte et al., 2017: 10, fig. 1M (check.).

Geographical distribution: Bechyné (1950a, 1952) recorded the species for Rio de Janeiro.

Type material: We examined photographs of the holotype of *P. fulvovittata* (Figures 4B-4D) from Brazil (NHRS).

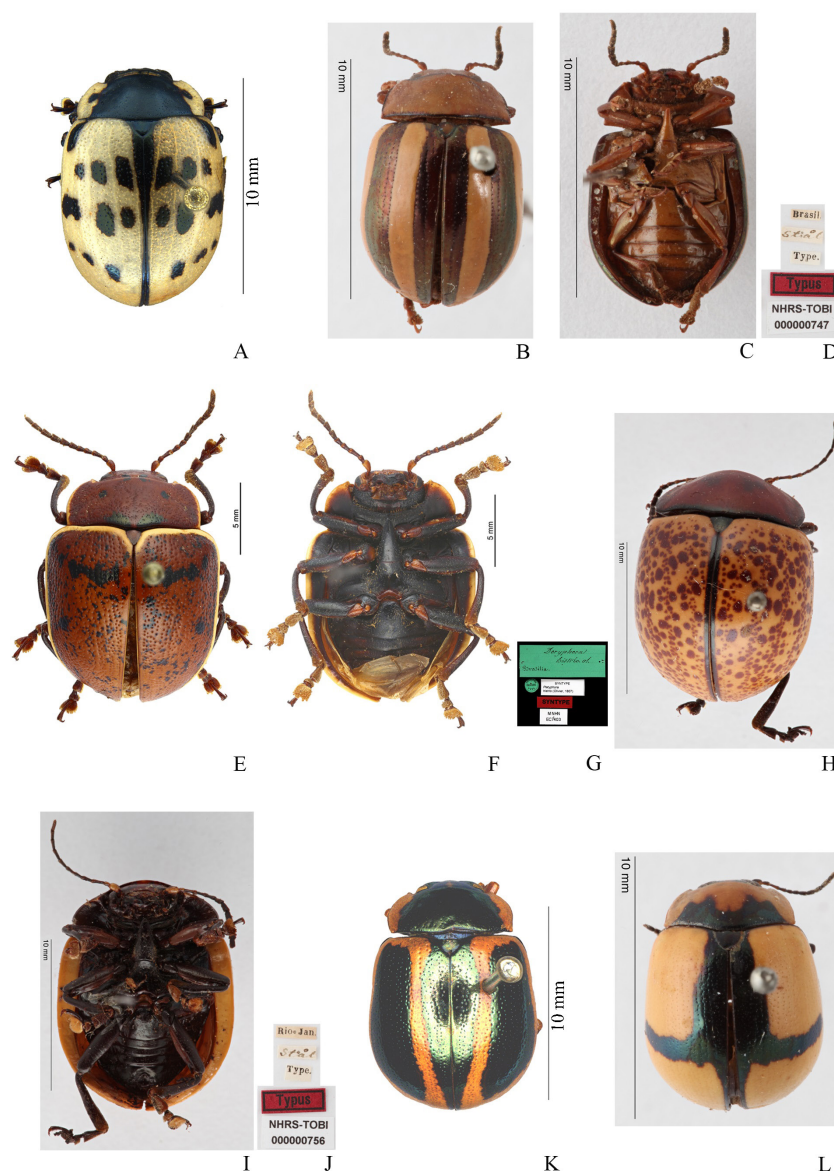


Figure 4. A, dorsal view of *Platyphora fraterna* (Stål, 1857); B-D, holotype of *Platyphora fulvovittata* (Bechyné, 1948), B, dorsal view, C, ventral view, D, labels; E-G, syntype of *Platyphora histrio* (Olivier, 1807), E, dorsal view, F, ventral view, G, labels; H-J, holotype of *Platyphora irrorata irrorata* (Stål, 1857), H, dorsal view, I, ventral view, J, labels; K, dorsal view of *Platyphora itaiyensis* (Bechyné, 1950); L, dorsal view of the holotype of *Platyphora jucunda* (Stål, 1857). Figs. E-G © A. Mantilleri/MNHN. Figs. B-D, H-J, L photographed by J. Bergsten (© 2016 Naturhistoriska Riksmuseet). Made available by the Swedish Museum of Natural History under Creative Commons Attribution 4.0 International Public License, CC-BY 4.0, <https://creativecommons.org/licenses/by/4.0/legalcode>.

Material examined: BRAZIL. Rio de Janeiro: *Itatiaia*, 2♀, 07-09.III.2008, 750m, M. L. Monné, J. R. Mermudes & M. A. Monné leg. (MNRJ); 1♂, 30.X.2008, 1250m, M. L. Monné & M. A. Monné leg. (MNRJ); *Rio de Janeiro*, 1♀, [no date], Santos Lima col. (MNRJ); *Serra Macaé*, 2♀, [no date and no collector] (MZSP and MNRJ).

***Platyphora histrio* (Olivier, 1807)**

(Figures 4E-4G)

Doryphora histrio Olivier, 1807: 587; Dejean, 1821: 121; 1833: 396; 1837: 420; Sturm, 1826: 133; 1843: 286; Gemminger & Harold, 1874: 3450 (cat.); Blackwelder 1946: 670 (cat.).

Chrysomela histrio; Stål, 1862: 15.

Doryphora (*Doryphora*) *histrio*; Weise, 1916: 18 (cat.).

Doryphorella (*Histrionella*) *histrio*; Achard, 1922: 46 (key); Bechyné, 1946: 87 (distr.).

Stichotaenia histrio; Bechyné, 1950a: 118 (distr.); 1952: 49 (cat.); 1954: 618 (distr.); Zikán & Zikán, 1967: 131 (distr.).

Platyphora histrio; Bechyné & Bechyné, 1965: 91 (distr.); Sekerka, 2016 (check.); Flinte et al., 2017: 10 (check.).

Doryphora albicincta Germar, 1823: 581; Dejean, 1837: 420; Sturm, 1843: 286.

Chrysomela histrio var. *d*; Stål, 1862: 15.

Doryphora (*Doryphora*) *histrio* ab. *albicincta*; Weise, 1916: 18 (cat.).

Doryphora histrio ab. *albicincta*; Blackwelder, 1946: 670 (cat.).

Stichotaenia histrio ab. *albicincta*; Bechyné, 1950a: 118 (distr.); 1952: 49 (cat.).

Geographical distribution: Bechyné (1950a, 1952, 1954); and Bechyné & Bechyné (1965) recorded the species for Minas Gerais, Espírito Santo, Rio de Janeiro, São Paulo, Paraná and Santa Catarina. New record for Bahia.

Type material: We examined photographs of the syntype of *P. histrio* (Figures 4E-4G) from Brazil (MNHN).

Material examined: BRAZIL. Bahia: *Itapetinga*, 1 specimen, 21.XI.1974, C. S. Carbonell leg. (MNRJ); *Maragogipe*, 1 specimen, X.1969, B. Silva leg. (MNRJ). Minas Gerais: *Botelhos* (*José Pedro*), 1 specimen, 23.XI.1921, J. F. Zikán leg. (MNRJ); *Pedra Azul*, 1 specimen, XII.1970, F. M. Oliveira leg. (MNRJ). Espírito Santo: *Colatina*, 2 specimens, XI.1970, A. Silva leg. (MNRJ); *Barra de São Francisco* (*Córrego do Itá*), 3 specimens, XI.1981, H. W. Saar leg. (MNRJ); *Linhares*, 1 specimen, XII.1962, Oliveira leg. (MNRJ); 1 specimen, I.1970, [without collector] (MNRJ); 1 specimen, IX.1970, B. Silva leg. (MNRJ); 1 specimen, X.1970, B. Silva leg. (MNRJ); 1 specimen, II.1972, B. Silva leg. (MNRJ); 1 specimen, III.1972, B. Silva leg. (MNRJ); 1 specimen, [no date], illegible collector (MNRJ). Rio de Janeiro: *Barra de Itabapoana*, 1 specimen, 10.XI.1935, M. Rosa leg. (MNRJ); *Itaguaí*, 2 specimens, 2.I.1973, M. Silva leg. (MNRJ); *Itatiaia*, 1 specimen, XI.1932, B. Pohl leg. (MZSP); 1 specimen, 27.III.1933, J. F. Zikán leg. (FIOC); *Rio de Janeiro*, 1 specimen, III.1946 (Campo Grande), Drumond leg. (MNRJ); 1 specimen, 3.XII.1946 (Estrada Rio-São Paulo), W. Zikán leg. (MNRJ); 1 specimen, X.1958 (Corcovado), Alvarenga & Seabra leg. (MNRJ); 1 specimen, 21.X.1959 (Corcovado), Alvarenga & Seabra leg. (MNRJ); 1 specimen, [no date and no collector] (MNRJ). São Paulo: *Cantareira*, 1 specimen, 5.XII.1934, [without collector] (MNRJ); 1 specimen, 30.XI.1937, Zellibor-Hauff leg. (MNRJ); *São Vicente*, 1 specimen, 10.II.1937, [without collector] (MNRJ). Santa Catarina: *Corupá*, 1 specimen, II.1954, A. Maller leg. (MNRJ); 2 specimens, [no date and no collector] (MNRJ); *Joinville*, 1 specimen, X.1921, illegible collector (MNRJ); 1 specimen, III.1952, Dirings leg. (MZSP); 1 specimen, XII.1955, Dirings leg. (MZSP); *Rio Vermelho*, 1 specimen, III.1950, Dirings leg. (MZSP); 1 specimen, XI.1950, Dirings leg. (MZSP); *Timbó*, 1 specimen, I.1962, Dirings leg. (MZSP); 1 specimen, XI.1956, Dirings leg. (MZSP); 1 specimen, [no date and no collector] (MNRJ).

***Platyphora irrorata* (Stål, 1857)**

(Figures 4H-4J)

Doryphora irrorata Stål, 1857: 54; Baly, 1858: 348; Gemminger & Harold, 1874: 3450 (cat.); Blackwelder, 1946: 670 (cat.).

Chrysomela irrorata; Stål, 1862: 55; 1865: 344.

Doryphora (*Doryphora*) *irrorata*; Weise, 1916: 17 (cat.).

Stichotaenia irrorata; Bechyné, 1950a: 120 (distr., key); Zikán & Zikán, 1967: 132 (distr.).

Stichotaenia irrorata irrorata; Bechyné, 1950a: 120 (distr., key); 1952: 50 (cat.).

Platyphora irrorata irrorata; Bechyné & Bechyné, 1965: 94 (distr.); Sekerka, 2016 (check.).

Doryphora apiata Lucas, 1859: 195; Stål, 1862: 56 (syn.).

Anthirrosterna lenticulata Motschulsky, 1860: 105; Stål, 1862: 56 (syn.).

Geographical distribution: Bechyné (1950a, 1952), and Bechyné & Bechyné (1965) recorded the species for Espírito Santo and Rio de Janeiro. New record for São Paulo.

Type material: We examined photographs of the holotype of *P. irrorata irrorata* (Figures 4H-4J) from Brazil (Rio de Janeiro) (NHRS).

Material examined: BRAZIL. Rio de Janeiro: *Itatiaia*, 1♂, 3.III.1930, J. F. Zikán leg. (MNRJ); 1♂, 20.I.1950, W. Zikán leg. (MNRJ); 1♂, 2.I.1951, W. Zikán leg. (MNRJ); 1♀, 2.I.1959, W. Zikán leg. (MNRJ); *Nova Friburgo*, 1♂, XII.1970, F. M. Oliveira leg. (MNRJ); *Rio de Janeiro* (*Corcovado*), 2♂, 28.IX.1952, D. Zajciw leg. (MNRJ); *Teresópolis*, 1♀, [no date], P. Schirch leg. (MNRJ). São Paulo: *Cantareira*, 1♀, 3.XII.1939, Zellibor-Hauff leg. (MNRJ).

***Platyphora itatiayensis* (Bechyné, 1950)**

(Figure 4K)

Stichotaenia itatiayensis Bechyné, 1950a: 126 (distr.); 1952: 50 (cat.); Zikán & Zikán, 1967: 132 (distr.).

Platyphora itatiayensis; Bechyné & Bechyné, 1965: 98 (distr.); Sekerka, 2016 (check.); Flinte et al., 2017: 10, fig. 1O (check.).

Geographical distribution: Bechyné (1950a) recorded the species for Rio de Janeiro (Itatiaia).

Material examined: BRAZIL. Rio de Janeiro: *Itatiaia*, 1♂, 1.I.1925, J. F. Zikán leg. (FIOC); 1♀, 56.XII.1956, 1200m, Seabra & Alvarenga leg. (MNRJ); 1♂, 5-25.XI.1974, 800m, H. S. Monné & M. A. Monné leg. (MNRJ); 1♂, 28. IX.2007, 1100m, C. Patiu, J. R. Mermudes, M. L. Monné & M. A. Monné leg. (MNRJ); *Rio de Janeiro* (*Guanabara*), 1♀, XII.1971/I.1972, F. M. Oliveira leg. (ZSMC).

***Platyphora jucunda* (Stål, 1857)**

(Figures 4L, 5A, 5B)

Doryphora jucunda Stål, 1857: 58; Gemminger & Harold, 1874: 3450 (cat.); Blackwelder, 1946: 670 (cat.).

Chrysomela jucunda; Stål, 1863: 95.

Doryphora (*Doryphora*) *jucunda*; Weise, 1916: 17 (cat.).

Stichotaenia jucunda; Bechyné, 1952: 50 (cat.); 1955: 6 (distr.); Zikán & Zikán, 1967: 133 (distr.).

Platyphora jucunda; Olckers, 2000: 504 (biol.); Sekerka, 2016 (check.); Flinte et al., 2017: 10, fig. 1P (check.).

Doryphora consobrina Stål, 1858: 472; 1863: 96.

Chrysomela jucunda var. *a*; Stål, 1863: 96.

Doryphora (*Doryphora*) *jucunda* ab. *consobrina*; Weise, 1916: 19 (cat.).

Doryphora jucunda ab. *consobrina*; Blackwelder, 1946: 670 (cat.).

Geographical distribution: Bechyné (1952, 1955), and Zikán & Zikán (1967) recorded the species for Rio de Janeiro and Minas Gerais.

Type material: We examined photographs of the holotype of *P. jucunda* (Figures 4L, 5A, 5B) from Brazil (NHRS).

***Platyphora manhumirima* Bechyné, 1958**

(Figures 5C-5E)

Platyphora manhumirima Bechyné, 1958: 533, 534; Bechyné & Bechyné, 1965: 97 (distr.); Seeno et al., 1976: 46 (cat.); Sekerka, 2016 (check.).

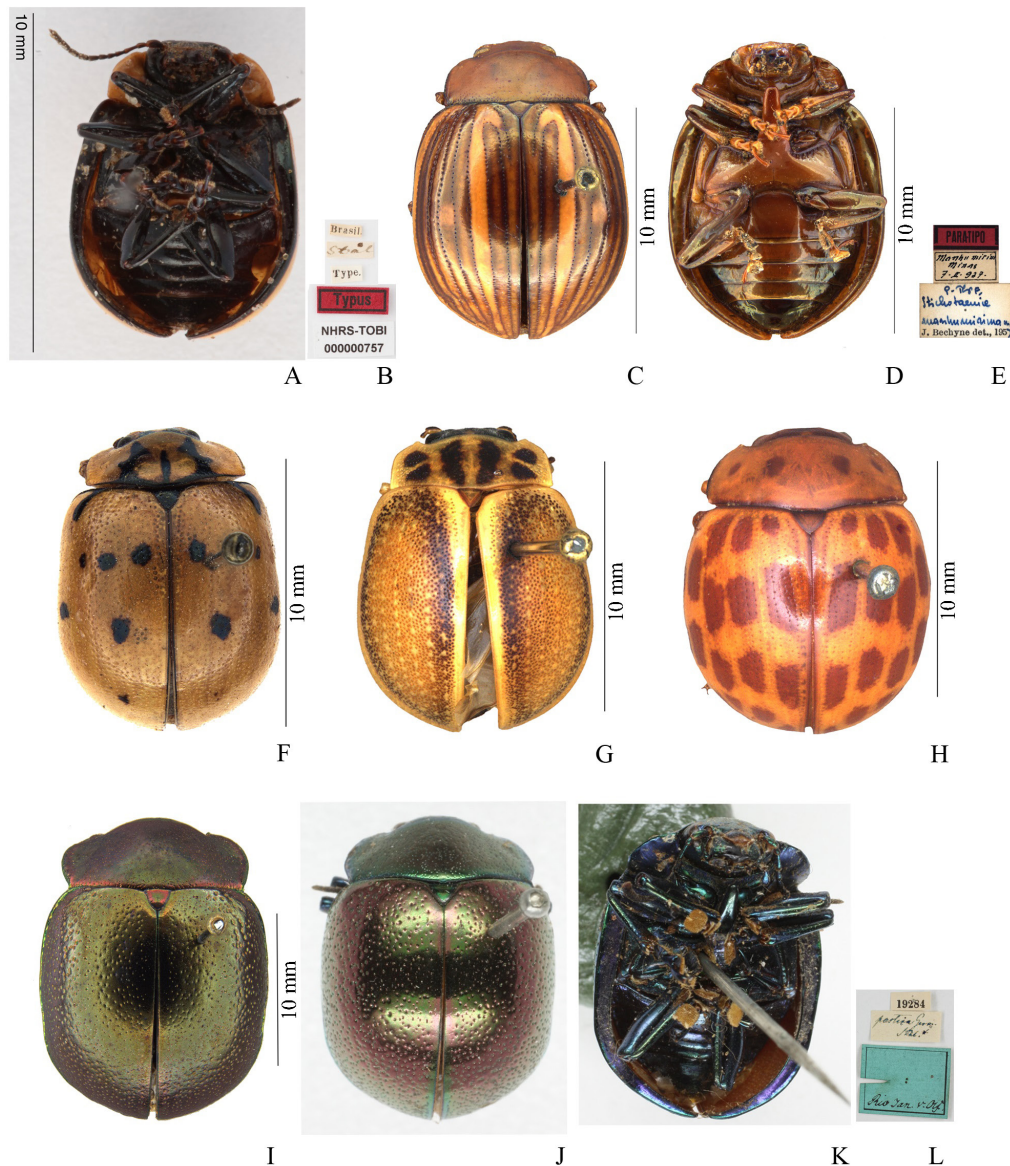


Figure 5. A-B, holotype of *Platyphora jucunda* (Stål, 1857), A, ventral view, B, labels; C-E, paratype of *Platyphora manhumirima* Bechyné, 1958, C, dorsal view, D, ventral view, E, labels; F, dorsal view of *Platyphora nigrosignata* (Stål, 1857); G, dorsal view of *Platyphora notaticollis* (Stål, 1858); H, dorsal view of *Platyphora pardalina* (Stål, 1858); I, dorsal view of *Platyphora pastica bourcieri* (Guérin-Méneville, 1855); J-L, syntype of *Platyphora pastica pastica* (Germar, 1823), J, dorsal view, K, ventral view, L, labels. Figs. J-L © J. Willers/ZMHB. Figs. A-B photographed by J. Bergsten (© 2016 Naturhistoriska Riksmuseet). Made available by the Swedish Museum of Natural History under Creative Commons Attribution 4.0 International Public License, CC-BY 4.0, <https://creativecommons.org/licenses/by/4.0/legalcode>.

Geographical distribution: Bechyné (1958) and Bechyné & Bechyné (1965) recorded the species for Minas Gerais and Rio de Janeiro.

Type material: We examined the paratype of *P. manhumirima* (Figures 5C-5E) from Brazil (Minas Gerais) (MZSP).

Material examined: BRAZIL. Minas Gerais: *Manhumirim*, 1 specimen (paratype), 7.II.1927, [without collector] (MZSP). Rio de Janeiro: *Itatiaia*, 1 specimen, 29.XI.1938, J. F. Zikán leg. (FIOC).

***Platyphora nigripes* (Stål, 1857)**

Doryphora nigripes Stål, 1857: 55; Gemminger & Harold, 1874: 3451 (cat.); Blackwelder, 1946: 670 (cat.).

Chrysomela nigripes; Stål, 1863: 89.

Doryphora (Doryphora) nigripes; Weise, 1916: 20 (cat.).

Stichotaenia nigripes; Zikán & Zikán, 1967: 133 (distr.).

Platyphora nigripes; Sekerka, 2016 (check.).

Geographical distribution: Stål (1857, 1863); Weise (1916) and Zikán & Zikán (1967) recorded the species for Rio de Janeiro.

***Platyphora nigrosignata* (Stål, 1857)**

(Figure 5F)

Doryphora nigrosignata Stål, 1857: 55; Gemminger & Harold, 1874: 3451 (cat.); Blackwelder, 1946: 670 (cat.).

Chrysomela nigrosignata; Stål, 1863: 88.

Doryphora (Doryphora) nigrosignata; Weise, 1916: 20 (cat.).

Stichotaenia nigrosignata; Bechyné, 1951a: 78 (distr.); 1953: 14, figs. 1, 2 (key); Zikán & Zikán, 1967: 133 (distr.).

Platyphora nigrosignata; Sekerka, 2016 (check.).

Geographical distribution: Bechyné (1951a, 1953) recorded the species for Minas Gerais, Espírito Santo and Rio de Janeiro (Itatiaia). New records for São Paulo, Paraná and Santa Catarina.

Material examined: BRAZIL. São Paulo: *Capivari*, 1♂, II.1955, Dirings leg. (MZSP); *Cantareira*, 1♂, XII.1932, Dirings leg. (MZSP). Paraná: *Guarapuava*, 1♂, III.1951, Dirings leg. (MZSP). Santa Catarina: *Anita Garibaldi*, 1♂ and 1♀, II.1940, Dirings leg. (MZSP); *Rio Vermelho*, 1♂, IV.1950, Dirings leg. (MZSP); 1♂, XII.1950, Dirings leg. (MZSP); *São Bento*, 1♀, III.1952, Dirings leg. (MZSP).

***Platyphora notaticollis* (Stål, 1858)**

(Figure 5G)

Doryphora notaticollis Stål, 1858: 257; Gemminger & Harold, 1874: 3452 (cat.); Blackwelder, 1946: 670 (cat.).

Chrysomela notaticollis; Stål, 1863: 110.

Dorysterna (*Trichomela*) *notaticollis*; Weise, 1916: 27 (cat.).

Trichomela notaticollis; Bechyné, 1951a: 79 (distr.); 1957: 56 (distr.); Zikán & Zikán, 1967: 134 (distr.).

Stichotaenia notaticollis; Bechyné, 1952: 53 (cat.).

Platyphora notaticollis; Sekerka, 2016 (check.).

Geographical distribution: Bechyné (1951a, 1957) recorded the species for Rio de Janeiro (Itatiaia).

Material examined: BRAZIL. Rio de Janeiro: *Itatiaia*, 1 specimen, XI.1924, J. F. Zikán leg. (FIOC); 1 specimen, 29.XII.1952, C. Leite, Seabra & Zikán leg. (FIOC).

***Platyphora pardalina* (Stål, 1858)**

(Figure 5H)

Doryphora pardalina Stål, 1858: 254; Gemminger & Harold, 1874: 3452 (cat.); Blackwelder, 1946: 671 (cat.).

Chrysomela pardalina; Stål 1862: 60.

Doryphora (*Doryphora*) *pardalina*; Weise, 1916: 21 (cat.).

Stichotaenia pardalina; Bechyné, 1950a: 120 (distr.); 1952: 51 (cat.); 1953: 5; Zikán & Zikán, 1967: 133 (distr.).

Platyphora pardalina; Bechyné & Bechyné, 1965: 95 (distr.); Sekerka, 2016 (check.); Flinte et al., 2017: 10 (check.).

Doryphora bohemani Baly, 1858: 346; Stål, 1862: 60 (syn.).

Doryphora maculata Lucas, 1859: 196; Stål, 1862: 60 (syn.); Bedel, 1887: 110.

Doryphora stalii Baly, 1859: 57; Stål, 1862: 60 (syn.).

Geographical distribution: Bechyné (1950a, 1952, 1953), and Bechyné & Bechyné (1965) recorded this species for Minas Gerais, Espírito Santo, Rio de Janeiro, São Paulo, Paraná and Rio Grande do Sul.

Material examined: BRAZIL. Minas Gerais: *Rio José Pedro*, 1♀, 21.XI.1920, W. Saar leg. (MNRJ). Rio de Janeiro: *Itatiaia*, 1♂, 18.XI.1924, [without collector]. (MNRJ); 1♂, 21.XII.1924, 700m, J. F. Zikán leg. (FIOC); 1♀, 22-24.I.2010, 750m, M. L. Monné, H. S. Monné & M. A. Monné leg. (MNRJ); 1♀, 22-25.X.2010, 850m, M. L. Monné & M. A. Monné leg. (MNRJ); *Resende* (*Serrinha de Alambari*), 1♀, XII.2008, U. Caramaschi & H. de Niemeyer leg. (MNRJ). São Paulo: *Amparo*, 2♀, [no date and no collector]. (MNRJ); *Engenho Coelho*, 1♂, 1920, A. Richter leg. (MNRJ); *Indiana*, 1♀, 10.III.1935, [without collector]. (MNRJ); *Rio Mucuri*, 1♀, [no date], Lindenberg leg. (ZSMC).

***Platyphora pastica bourcieri* (Guérin-Méneville, 1855)**

(Figure 5I)

Doryphora bourcieri Guérin-Méneville, 1855: 604.

Chrysomela pastica var. *c*; Stål, 1863: 132.

Doryphora (*Doryphora*) *pastica* ab. *bourcieri*; Weise, 1916: 21 (cat.).

Doryphora pastica ab. *bourcieri*; Blackwelder, 1946: 671 (cat.).

Stichotaenia pastica ab. *bourcieri*; Bechyné, 1952: 51 (cat.); Zikán & Zikán, 1967: 133 (distr.).

Platyphora pastica bourcieri; Bechyné & Bechyné, 1965: 101; Sekerka, 2016 (check.).

Geographical distribution: Stål (1863) recorded this species for Rio de Janeiro and Santa Catarina, and Bechyné & Bechyné (1965) recorded it for Minas Gerais.

Material examined: BRAZIL. Rio de Janeiro: *Itatiaia*, 1♂, 18.XI.1924, [without collector] (MNRJ); 1♂, XII.1933, 800m, H. S. Lopes & R. Cunha leg. (MNRJ); 1♂, 30.XI.1942, 1100m, W. Zikán leg. (MNRJ); 3♂, II.1959, W. Zikán leg. (MNRJ); 1♀, [no date], illegible collector (MNRJ); 1♀, [no date and no collector] (MNRJ); *Mendes*, 1♂, [no date], Le Moullet leg. (MNRJ); *Petrópolis* (*Alto Mosela*), 1♂, 9.II.1975, 1200m, D. Albuquerque leg. (MNRJ).

***Platyphora pastica pastica* (Germar, 1823)**

(Figures 5J-5L)

Doryphora pastica Germar, 1823: 575; Dejean, 1833: 396; 1837: 420; Gemminger & Harold, 1874: 3452 (cat.); Blackwelder, 1946: 671 (cat.).

Chrysomela pastica; Stål, 1863: 131.

Doryphora (*Doryphora*) *pastica*; Weise, 1916: 21 (cat.).

Stichotaenia pastica; Bechyné, 1952: 51 (cat.); 1954: 660 (distr.); Zikán & Zikán, 1967: 133 (distr.).

Platyphora pastica pastica; Bechyné & Bechyné, 1965: 100 (distr.); Sekerka, 2016 (check.).

Geographical distribution: Stål (1863) recorded this species for Santa Catarina. Bechyné (1952, 1954), and Bechyné & Bechyné (1965) recorded it for Rio de Janeiro and São Paulo. New record for Minas Gerais.

Type material: We examined photographs of the syntype of *P. pastica pastica* (Figures 5J-5L) from Brazil (Rio de Janeiro) (ZMHB).

Material examined: BRAZIL. Minas Gerais: *Serra do Caraça*, 1♂, XII.1975, M. A. Monné leg. (MNRJ). Rio de Janeiro: *Itatiaia*, 1♂, 1. I. 1926, J. F. Zikán leg. (FIOC); 1♂, 1. I. 1935, J. F. Zikán leg. (MNRJ); 1♂, 3.XII.1941, J. F. Zikán leg. (FIOC); 1♂, 14. I. 1958, D. Zajciw leg. (MNRJ); 1♂, 22-26. XII. 2007, J. R. Mermudes, M. L. Monné & M. A. Monné leg. (MNRJ); *Rio de Janeiro*, 1♂, XI.1932, Dário leg. (MNRJ); 1♂, 29.XI.1933, 1100m, W. Zikán leg. (MNRJ); 1♂, X.1936, [without collector] (MNRJ); 1♀, IV.1937 (Tijuca), Seabra leg. (MNRJ); 1♂, IV.1937 (Floresta da Tijuca), C. A. Campos Seabra leg. (MNRJ); 1♂, 22. II.1944 (Gávea), Domingos leg. (MNRJ); 1♂, 10.II. 1952 (Floresta da Tijuca), D. Zajciw leg. (MNRJ); 1♂, 23. II. 1952 (Estrada da Vista Chinesa), C. A. Campos Seabra leg. (MNRJ); 1♂, 16. IV. 1953 (Corcovado), D. Zajciw leg. (MNRJ); 1♂, XI. 1953 (Corcovado), D. Zajciw leg. (MNRJ); 1♂, 17. I. 1954 (Corcovado), D. Zajciw leg. (MNRJ); 1♂, XI.1955 (Corcovado), D. Zajciw leg. (MNRJ); 1♂, 31. XII.1966, Wygodzinsky leg. (MNRJ); 1♀, I.1977 (Represa Rio Grande), F. Lima & F. M. Oliveira leg. (MNRJ); 1♀, [no date and no collector] (NHMW). São Paulo: *Serra da Bocaina*, 1♂, IX.1950, Ary de Faria leg. (MNRJ).

***Platyphora pervicax* (Stål, 1859)**

(Figure 6A)

Doryphora pervicax Stål, 1859: 306; Gemminger & Harold, 1874: 3452 (cat.); Blackwelder, 1946: 671 (cat.).

Chrysomela pervicax; Stål, 1863: 91.

Doryphora (*Doryphora*) *pervicax*; Weise, 1916: 21 (cat.).

Stichotaenia pervicax; Bechyné, 1952: 51 (cat.); Zikán & Zikán, 1967: 133 (distr.).

Platyphora pervicax; Sekerka, 2016 (check.); Flinte et al., 2017: 10 (check.).

Geographical distribution: Bechyné (1952) recorded this species for Rio de Janeiro and Minas Gerais. New record for São Paulo.

Material examined: BRAZIL. Minas Gerais: *Paraisópolis* (*Serra dos Cochós*), 1♀, [no date], 1460m, B. Pohl leg. (MZSP). Rio de Janeiro: *Itatiaia*, 7♀, 7.X.1923, 700m, J. F. Zikán leg. (FIOC); 1♀, 1.II.1944, 900m, H. Zellibor leg. (MNRJ); 1♂, XI.1947, 700m, W. Zikán leg. (MNRJ); 1♂, XI.1952, 700m, Leonor Zikán leg. (MNRJ); 1♀, I.1955, Dirings leg. (MZSP); 2♂, I.1960, Dirings leg. (MZSP); 1♂, 2.XII.1970, 850m, L. Zikán leg. (MNRJ); 1♂, 28.IX.2007, 1100m, C. Patiu, J. R. Mermudes, M. L. Monné & M. A. Monné leg. (MNRJ); 1♂, 15-17.XI.2007, 700m, M. L. Monné, M. Simões & H. Quintino leg. (MNRJ); 1♂ and 1♀, 02-06.

XI.2015 (Lago Azul), Biota Faperj leg. (MNRJ). São Paulo: *Jabaquara*, 1♂, IX.1933, H. Zellibor leg. (MNRJ); *São Paulo*, 1♀, 24.XI.1929 (Matto do Governo), illegible collector.

***Platyphora placida* (Stål, 1858)**

(Figures 6B-6D)

Doryphora placida Stål, 1858: 255; Gemminger & Harold, 1874: 3452 (cat.); Blackwelder, 1946: 671 (cat.).

Chrysomela placida; Stål, 1862: 57.

Doryphora (Doryphora) placida; Weise, 1916: 21 (cat.).

Platyphora placida; Bechyné & Bechyné, 1965: 95 (distr.); Sekerka, 2016 (check.).

Geographical distribution: Bechyné & Bechyné (1965) recorded this species for Rio de Janeiro (Itatiaia) and São Paulo.

Type material: We examined photographs of the holotype of *P. placida* (Figures 6B-6D) from Brazil (NHRS).

Material examined: BRAZIL. Rio de Janeiro: *Itatiaia*, 1 specimen, 4.X.1930, J. F. Zikán leg. (FIOC); 1 specimen, I.1960, Dirings leg. (MZSP).

***Platyphora princeps* (Gray, 1832)**

(Figures 6E, 6F)

Doryphora princeps Gray, 1832: 149; Jacoby, 1883: 249; Blackwelder, 1946: 671 (cat.).

Chrysomela princeps; Stål, 1862: 53.

Doryphora (Doryphora) princeps; Weise, 1916: 22 (cat.).

Stichotaenia princeps; Bechyné, 1951: 76; 1952: 51 (cat.); Zikán & Zikán, 1967: 133 (distr.).

Platyphora princeps; Sekerka, 2016 (check.); Flinte et al., 2017: 10 (check.).

Doryphora superba Perty, 1832: 106; Stål, 1862: 53 (syn.); Gemminger & Harold, 1874: 3454 (cat.).

Stichotaenia fulgora; Zikán & Zikán, 1967: 132 (distr.) (not Gray, 1832).

Geographical distribution: Blackwelder (1946) recorded this species for México, Guatemala, Honduras and Bolívia; Bechyné (1951a) recorded it for Brazil (Rio de Janeiro, in Itatiaia). New record for São Paulo.

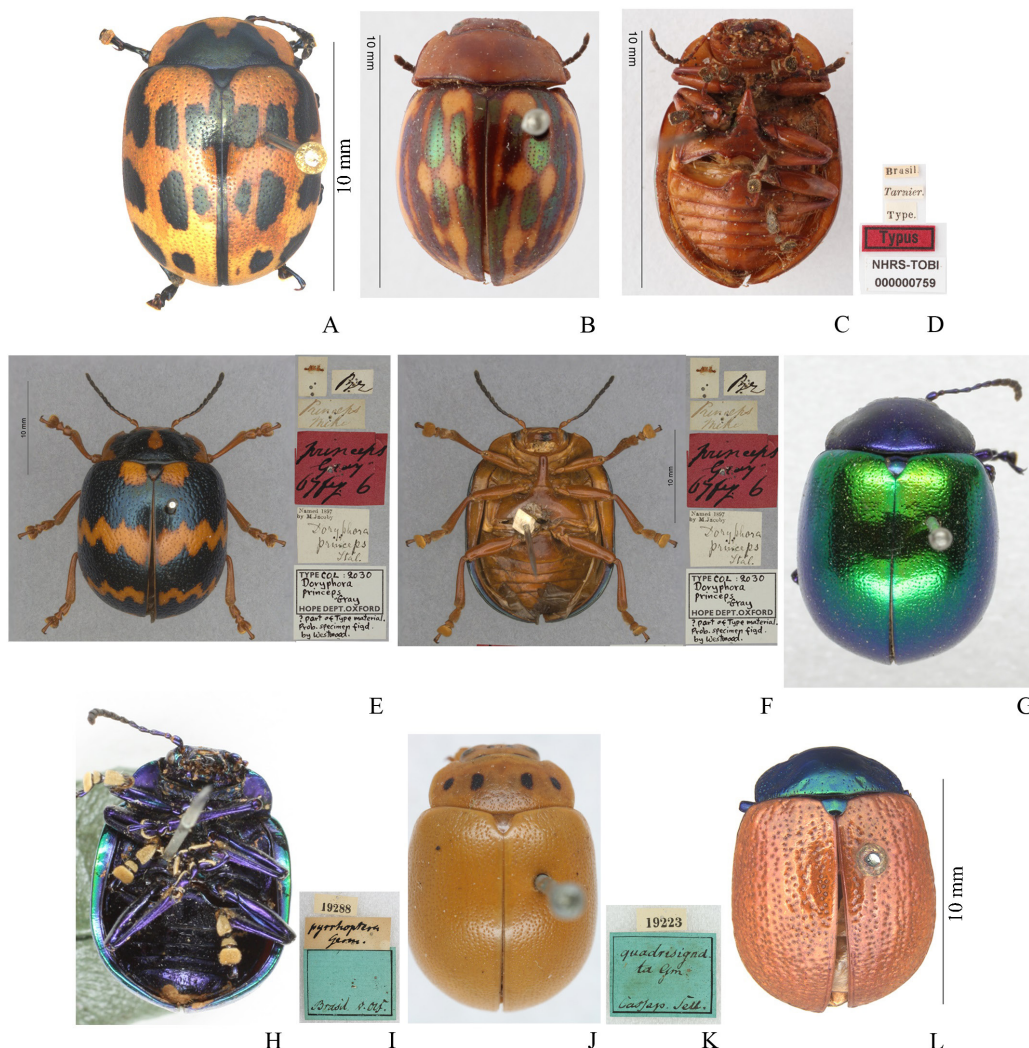


Figure 6. A, dorsal view of *Platyphora pervicax* (Stål, 1859); B-D, holotype of *Platyphora placida* (Stål, 1858), B, dorsal view, C, ventral view, D, labels; E-F, syntype of *Platyphora princeps* (Gray, 1832), E, dorsal view and labels, F, ventral view and labels; G-I, syntype of *Platyphora pyrrhoptera* (Germar, 1823), G, dorsal view, H, ventral view, I, labels; J-K, syntype of *Platyphora quadrisignata* (Germar, 1823), J, dorsal view, K, labels; L, dorsal view of *Platyphora semiviridis* (Jacoby, 1903). Figs. E-K © J. Willers/ZMHB. Figs. B-D photographed by J. Bergsten (© 2016 Naturhistoriska Riksmuseet). Made available by the Swedish Museum of Natural History under Creative Commons Attribution 4.0 International Public License, CC-BY 4.0, <https://creativecommons.org/licenses/by/4.0/legalcode>.

Type material: We examined photographs of the syntype of *P. princeps* (Figures 6E, 6F) from Brazil (ZMHB).

Material examined: BRAZIL. Rio de Janeiro: *Itatiaia*, 1♂, 05.I.1925, 700m, J. F. Zikán leg. (FIOC); 1♂, 03.II.1927, [without collector]. (MNRJ); 1♀, 24.XI.1932, 700m, W. Zikán leg. (MNRJ); 1♂, 07.III.1933, 700m, W. Zikán leg. (MNRJ). São Paulo: *Amparo*, 1♂ and 1♀, [no date and no collector] (MNRJ); *Cotia*, 1♀, [no date], illegible collector (MNRJ).

***Platyphora pyrrhoptera* (Germar, 1823)**

(Figures 6G–6I)

Doryphora pyrrhoptera Germar, 1823: 577; Dejean, 1833: 396; 1837: 420; Sturm, 1843: 286; Gemminger & Harold, 1874: 3452 (cat.); Blackwelder 1946: 671 (cat.).

Chrysomela pyrrhoptera; Stål, 1863: 135.

Doryphora (Doryphora) pyrrhoptera; Weise, 1916: 22 (cat.).

Stichotaenia pyrrhoptera; Zikán & Zikán, 1967: 133 (distr.).

Platyphora pyrrhoptera; Sekerka, 2016 (check.).

Geographical distribution: Zikán & Zikán (1967) recorded this species for Rio de Janeiro. New record for São Paulo.

Type material: We examined photographs of the syntypes of *P. pyrrhoptera* (Figures 6G–6I) from Brazil (ZMHB).

Material examined: BRAZIL. Rio de Janeiro: *Itatiaia*, 1♂, [no date], Gentil P. Machado leg. (FIOC). São Paulo: *Cantareira*, 1♂, 5.II.1939, Zellibor-Hauff leg. (MNRJ).

***Platyphora quadrisignata* (Germar, 1823)**

(Figures 6J, 6K)

Doryphora quadrisignata Germar, 1823: 580; Sturm, 1826: 133; Dejean, 1833: 397; 1837: 421; Gemminger & Harold, 1874: 3453 (cat.); Blackwelder 1946: 671 (cat.).

Chrysomela quadrisignata; Stål, 1862: 85.

Doryphora (Doryphora) quadrisignata; Weise, 1916: 22 (cat.).

Stichotaenia quadrisignata; Bechyné, 1948: 306; 1952: 51 (cat.); 1953: 6 (distr.); 1954: 654 (distr.); Buzzi, 1979: 47, 48 (biol.).

Platyphora quadrisignata; Bechyné & Bechyné, 1965: 97; Schroder et al., 1994: 237, 238, 239, 240, 242, figs. 1, 2 (biol.); Medal et al., 2000: 629 (biol.); Olckers, 2000: 507 (biol.); Olckers et al., 2002: 257, 258 (biol.); Santiago-Blay et al., 2012: 339 (biol.); Windsor et al., 2013: 75 (biol.); Chaboo et al., 2014: 19 (biol.); Sekerka, 2016 (check.).

Geographical distribution: Bechyné (1952, 1953, 1954) and Bechyné & Bechyné (1965) recorded this species for Brazil (Bahia, Minas Gerais, Espírito Santo, Rio de Janeiro, São Paulo, Paraná, Santa Catarina and Rio Grande do Sul), Paraguay and Argentina (Misiones).

Type material: We examined photographs of the syntype of *P. quadrisignata* (Figures 6J, 6K) (ZMHB).

Material examined: BRAZIL. Minas Gerais: *Rio Claro*, 1♂ and 1♀, IX.1947, Carvalho leg. (MNRJ). Rio de Janeiro: *Itatiaia*, 1♀, XI.1950, Travessos & Dalcly leg. (MNRJ). São Paulo: *Angatuba*, 1♂ and 1♀, III.1921, Marques leg. (MNRJ); 1♂ and 1♀, I.1923, illegible collector (MNRJ); *Campos do Jordão*, 1♀, II.1937, P. C. Porto leg. (MNRJ); *Engenho Coelho*, 1♀, XII.1920, A. Richter leg. (MNRJ); *São Paulo*, 1♂, 6.II.1923, [without collector] (MNRJ); 2♀, 16.X.1927, C. Melo leg. (MNRJ); 1♀, 2.XII.1928, [without collector] (MNRJ). Paraná: *Curitiba*, 1♀, [no date], Friedenreich leg. (MNRJ); *Iratí*, 1♀, 25.I.1962, D. Zajciw leg. (MNRJ); *Rio Negro*, 1♀, 1.X.1924, M. Witte leg. (MNRJ); 1♀, 10.IX.1924, M. Witte leg. (MNRJ); 1♀, 10.II.1925, [without collector] (MNRJ); 1♀, XII.1948, M. Witte leg. (MNRJ). Santa Catarina: *Mafra*, 2♀, XI.1968, A. Maller leg. (MNRJ). Rio Grande do Sul: *Pelotas*, 1♀, X.1950, C. Biezanko leg. (MNRJ).

***Platyphora semiviridis* (Jacoby, 1903)**

(Figure 6L)

Doryphora semiviridis Jacoby, 1903: 32; Blackwelder, 1946: 671 (cat.).

Doryphora (Doryphora) semiviridis; Weise, 1916: 24 (cat.).

Stichotaenia semiviridis; Bechyné, 1948: 306; 1952: 52 (cat.).

Platyphora semiviridis; Bechyné & Bechyné, 1965: 99 (distr.); Olckers, 1998: 225, 227–237 (host); 1999: 69 (host); 2000: 498, 507 (host); Flowers, 2004: 81; Sekerka, 2016 (check.); Flinte et al., 2017: 10 (check.).

Geographical distribution: Bechyné (1952) and Bechyné & Bechyné (1965) recorded this species for Minas Gerais, São Paulo, Paraná and Santa Catarina. New record for Rio de Janeiro.

Material examined: BRAZIL. Minas Gerais: *Itajuba*, 1 specimen, III.1994, S. Naser leg. (MZSP). Rio de Janeiro: *Itatiaia*, 1 specimen, 5.X.1927, J. F. Zikán leg. (FIOC); *Resende (Engenheiro Passos)*, 1 specimen, 14.III.1994, S. Naser & T. Olckers leg. (MZSP). São Paulo: *Cantareira*, 1 specimen, III.1906 [without collector] (MZSP).

***Platyphota signiceps* (Stål, 1857)**

(Figures 7A–7C)

Doryphora signiceps Stål, 1857: 58; Gemminger & Harold, 1874: 3454 (cat.); Blackwelder, 1946: 672 (cat.).

Chysomela signiceps; Stål, 1863: 101.

Doryphora (Doryphora) signiceps; Weise, 1916: 24 (cat.).

Stichotaenia signiceps; Bechyné, 1950a: 128 (distr.); 1952: 52 (cat.); Zikán & Zikán, 1967: 133 (distr.).

Platyphora signiceps; Sekerka, 2016 (check.); Flinte et al., 2017: 10 (check.).

Geographical distribution: Bechyné (1950a, 1952), and Zikán & Zikán (1967) recorded this species for Rio de Janeiro (Itatiaia). New records for Minas Gerais and São Paulo.

Type material: We examined photographs of the holotype of *P. signiceps* (Figures 7A–7C) from Brazil (NHRS).

Material examined: BRAZIL. Minas Gerais: *Juiz de Fora*, 1♂, XII.1980, G. S. Andrade leg. (MNRJ); *Manhuaçu*, 1♂ and 1♀, 10.XII.1936, [without collector] (MNRJ); *Passa Quatro*, 1♂, XI.1915, illegible collector (MNRJ). Rio de Janeiro: *Itatiaia*, 1♀, 8.I.1936, J. F. Zikán leg. (FIOC); 1♂, 6.I.1954, W. Zikán leg. (MNRJ); *Nova Friburgo (Muri)*, 1♀, I.1964, D. Zajciw leg. (MNRJ); *Serra Macaé*, 1♂ and 2♀, [no date and no collector] (MNRJ); *Teresópolis*, 1♀, 2.XII.1959, D. Zajciw leg. (MNRJ). São Paulo: *Cantareira*, 1♂, [no date and no collector] (MNRJ).

***Platyphora straminea* (Stål, 1858)**

(Figures 7D–7F)

Doryphora straminea Stål, 1858: 258; Gemminger & Harold, 1874: 3454 (cat.); Blackwelder, 1946: 672 (cat.).

Chrysomela straminea; Stål, 1863: 118.

Doryphora (Doryphora) straminea; Weise, 1916: 25 (cat.).

Stichotaenia straminea; Bechyné, 1950a: 129 (distr.); 1952: 52 (cat.); Zikán & Zikán, 1967: 133 (distr.).

Platyphora straminea; Bechyné, 1958: 533; Sekerka, 2016 (check.).

Geographical distribution: Bechyné (1950a; 1952) recorded this species for Rio de Janeiro and São Paulo; Zikán & Zikán (1967) recorded it for Minas Gerais.

Type material: We examined photographs of the holotype of *P. straminea* (Figures 7D–7F) from Brazil (NHRS).

Material examined: BRAZIL. Minas Gerais: *Passa Quatro*, 1♀, XI.1915, illegible collector (MNRJ). Rio de Janeiro: *Itatiaia*, 1♂, 21.XII.1925, illegible collector (FIOC); 1♀, II.1963, Dirings leg. (MZSP); 1♂, II.1968, Dirings leg. (MZSP); 1♀, [no date and no collector] (FIOC); *Rio de Janeiro*, 1♀, 4.II.1952 (*Alto da Boa Vista*), C. A. C. Seabra leg. (MNRJ); 1♀, 19.II.1914 (*Estrada do Sumaré*), illegible collector (MNRJ); 3♀, X.1953 (*Estrada do Sumaré*), C. A. C. Seabra leg. (MNRJ). São Paulo: *São Paulo*, 2♀, 7.XI.1921 (Matto do Governo), illegible collector (MNRJ); 1♀, 25.XII.1921 [without collector] (MNRJ); 1♂ and 1♀, 24.I.1924 (Matto do Governo), illegible collector (MNRJ); 1♂ and 1♀, 29.IX.1929 (Matto do Governo), illegible collector (MNRJ); 1♂ and 1♀, 15.XI.1929 (Matto do Governo), illegible collector (MNRJ); 1♂ and 1♀, 1.XI.1931 (M. do Governo), J. Melzer leg. (MNRJ).

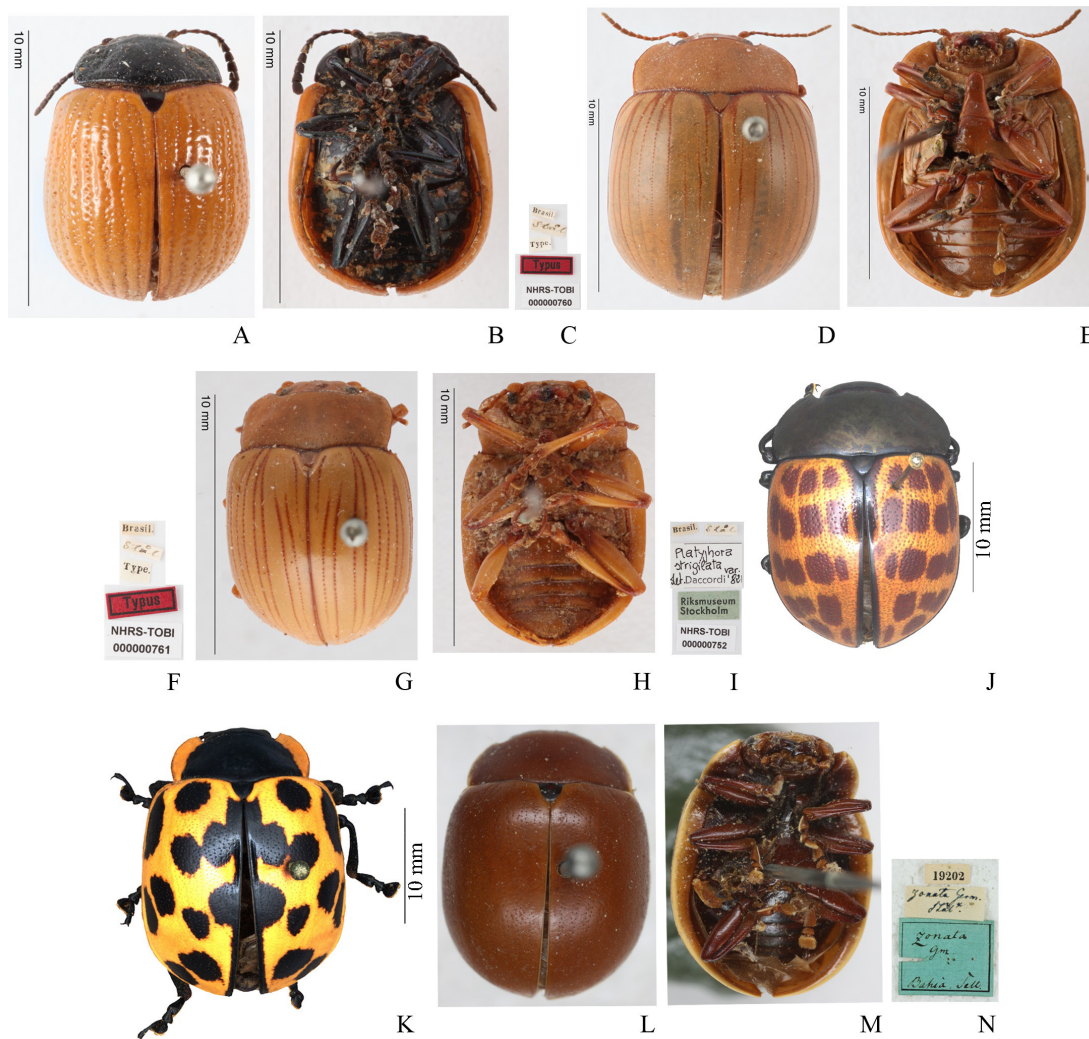


Figure 7. A-C, holotype of *Platyphora signiceps* (Stål, 1857), A, dorsal view, B, ventral view, C, labels; D-F, holotype of *Platyphora straminea* (Stål, 1858), D, dorsal view, E, ventral view, F, labels; G-I, holotype of *Platyphora strigilata* (Stål, 1858), G, dorsal view, H, ventral view, I, labels; J, dorsal view of *Platyphora tessellata tessellata* (Olivier, 1807); K, dorsal view of *Platyphora vigintinupunctata* (Chevrolat, 1831); L-N, syntype of *Platyphora zonata* (Germar, 1823), L, dorsal view, M, ventral view, N, labels. Fig. L-N © J. Willers/ZMHB. Figs. A-I photographed by J. Bergsten (© 2016 Naturhistoriska Riksmuseet). Made available by the Swedish Museum of Natural History under Creative Commons Attribution 4.0 International Public License, CC-BY 4.0, <https://creativecommons.org/licenses/by/4.0/legalcode>.

Platyphora strigilata (Stål, 1858)

(Figures 7G-7I)

Doryphora strigilata Stål, 1858: 257; Gemminger & Harold, 1874: 3454 (cat.); Blackwelder, 1946: 672 (cat.).

Chrysomela strigilata; Stål, 1863: 118.

Doryphora (Doryphora) strigilata; Weise, 1916: 25 (cat.).

Stichotaenia strigilata; Bechyné, 1950a: 129 (distr.); 1952: 52 (cat.); 1953: 13; 1954: 656 (distr.); Zikán & Zikán, 1967: 133 (distr.).

Platyphora strigilata; Bechyné, 1958: 532 (distr.); Bechyné & Bechyné, 1965: 99 (distr.); Sekerka, 2016 (check.); Flinte et al., 2017: 10 (check.).

Geographical distribution: Bechyné (1950a, 1952, 1958), and Bechyné & Bechyné (1965) recorded this species for Goiás, Minas Gerais, Espírito Santo, Rio de Janeiro, São Paulo and Santa Catarina.

Type material: We examined photographs of the holotype of *P. strigilata* (Figures 7G-7I) from Brazil (NHRS).

Material examined: BRAZIL. Espírito Santo: Barra de São Francisco (Córrego do Itá), 1♀, XI.1954, W. Zikán leg. (MNRJ). Minas Gerais: Juiz de Fora, 1♀, XII.1980, G. S. Andrade leg. (MNRJ); Manhumirim, 1♂,

30.III.1937, Zellibor-Hauff leg. (MNRJ). Rio de Janeiro: Itatiaia, 1♂, 10.I.1948, J. F. Zikán leg. (FIOC); 1♂, I.1955, Dirings leg. (MZSP); 1♀, II.1969, Dirings leg. (MZSP). São Paulo: Campos do Jordão, 1♀, [no date and no collector] (MNRJ); Cananéia, 1♀, 5.X.1934, [without collector] (MNRJ); Cantareira, 1♂, 1.X.1936, [without collector] (MNRJ); São Paulo, 1♀, 9.XII.1923 (Matto do Governo), illegible collector (MNRJ); 1♂, 8.XII.1926 (Matto do Governo), illegible collector (MNRJ). Santa Catarina: Corupá, 1♀, X.1967, A. Maller leg. (MNRJ); Pinhal, 1♂, I.1951, A. Maller leg. (MNRJ); 1♂, XI.1929, A. Maller leg. (MNRJ).

Platyphora tessellata tessellata (Olivier, 1807)

(Figure 7J)

Doryphora tessellata Olivier, 1807: 585; Dejean, 1833: 395; Stål, 1858: 253; Gemminger & Harold, 1874: 3454 (cat.); Blackwelder, 1946: 672 (cat.).

Chrysomela tessellata; Stål, 1862: 37.

Doryphora (Doryphora) tessellata; Weise, 1916: 25 (cat.).

Stichotaenia tessellata; Bechyné, 1952: 53 (cat.); 1953: 12; Zikán & Zikán, 1967: 133 (distr.).

Stichotaenia tessellata tessellata; Bechyné, 1953: 13 (distr.).

Platyphora tessellata tessellata; Sekerka, 2016 (check.).

Geographical distribution: Bechyné (1952, 1953) recorded this species for Espírito Santo and Rio de Janeiro; Zikán & Zikán (1967) recorded it for Minas Gerais. New records for Bahia, São Paulo, Paraná and Santa Catarina.

Material examined: BRAZIL. Bahia: *Motel da Divisa*, 1♀, XI.1971, Seabra & Roppa leg. (MNRJ). Minas Gerais: *Ipanema*, 1♂, XI.1980, G. S. Andrade leg. (MNRJ); 2♀, III.1981, G. S. Andrade leg. (MNRJ); *Paraopeba*, 1♀, 12.XII.1952, E. P. Henrique leg. (MNRJ); *Passa Quatro*, 1♀, 8.XI.1915, illegible collector (MNRJ). Espírito Santo: *Barra de São Francisco (Córrego do Itá)*, 3♀, XI.1956, W. Zikán leg. (MNRJ); 1♂, XII.1959, W. Grossmann leg. (MNRJ); *Linhares*, 1♂ and 1♀, XII.1962, F. M. Oliveira leg. (MNRJ); 1♂, XI.1967, B. Silva leg. (MNRJ); 6♀, XI.1967, F. M. Oliveira leg. (MNRJ); 1♂ and 1♀, XII.1967, B. Silva leg. (MNRJ); 1♀, XII.1967, F. M. Oliveira leg. (MNRJ); 1♀, V.1968, F. M. Oliveira leg. (MNRJ); 2♂ and 1♀, X.1968, B. Silva leg. (MNRJ); 1♂, X.1968, F. M. Oliveira leg. (MNRJ); 1♀, X.1968, [without collector] (MNRJ); 1♂ and 1♀, XII.1968, B. Silva leg. (MNRJ); 1♂, XI.1969, F. M. Oliveira leg. (MNRJ); 1♀, XII.1969, B. Silva leg. (MNRJ); 1♀, X.1970, B. Silva leg. (MNRJ); 1♂, IX.1977, B. Silva leg. (MNRJ); 1♀, III.1984, B. Silva leg. (MNRJ); 1♂ and 1♀, [no date and no collector] (MNRJ). Rio de Janeiro: *Itatiaia*, 1♂, VIII.1926, J. F. Zikán leg. (FIOC); *Rio de Janeiro*, 1♂ and 1♀, IV.1933 (Corcovado), Travassos leg. (MNRJ); 1♂, 28.IX.1952, D. Zajciw leg. (MNRJ); 1♂ and 1♀, 20.X.1952 (Corcovado), D. Zajciw leg. (MNRJ); 1♀, 6.XII.1952 (Corcovado), D. Zajciw leg. (MNRJ); 1♀, 22.XI.1953 (Corcovado), D. Zajciw leg. (MNRJ); 1♂, 11.XII.1953 (Jacarepaguá), Newton Santos leg. (MNRJ); 1♀, 17.I.1954 (Corcovado), D. Zajciw leg. (MNRJ); 1♂, XI.1956 (Corcovado), D. Zajciw leg. (MNRJ); 1♀, 21.X.1959 (Corcovado), Alvarenga & Seabra leg. (MNRJ); 1♀, 4.XI.1959 (Corcovado), Alvarenga & Seabra leg. (MNRJ); 1♂, VII.1969 (Represa Rio Grande), B. Silva leg. (MNRJ); 1♀, XI.1974 (Represa Rio Grande), F. M. Oliveira leg. (MNRJ); *Teresópolis*, 1♀, [no date and no collector] (MNRJ). São Paulo: *Amparo*, 1♀, [no date and no collector] (MNRJ); *Engenho Coelho*, 1♂, XII.1920, A. Richter leg. (MNRJ); *Jabaquara*, 1♀, 14.XII.1938, Zellibor-Hauff leg. (MNRJ). Paraná: *Toledo*, 2♂, [no date and no collector] (MNRJ). Santa Catarina: *Rio Negrinho*, 1♂, [no date and no collector] (MNRJ).

Platyphora vidanoi Daccordi, 1994

Platyphora vidanoi Daccordi, 1994: 222, fig. 1; Flinte et al., 2017: 10, fig. 1S (check.).

Geographical distribution: Daccordi (1994) recorded for Minas Gerais and São Paulo; Flinte et al. (2017) registered for Rio de Janeiro (Itatiaia).

Platyphora vigintiunopunctata (Chevrolat, 1831)

(Figure 7K)

Doryphora vigintiunopunctata Chevrolat, 1831: 13; Gemminger & Harold, 1874: 3455 (cat.); Blackwelder, 1946: 672 (cat.).

Chrysomela vigintiunopunctata; Stål, 1862: 80.

Doryphora (Doryphora) vigintiunopunctata; Weise, 1916: 26 (cat.).

Stichotaenia vigintiunopunctata; Bechyné, 1951a: 76 (distr.); 1954: 652 (distr.); Zikán & Zikán, 1967: 133 (distr.).

Platyphora vigintiunopunctata; Sekerka, 2016 (check.); Flinte et al., 2017: 10 (check.).

Geographical distribution: Bechyné (1951a, 1954) recorded this species for Minas Gerais and Santa Catarina (Corupá). Zikán & Zikán (1967) recorded it for Rio de Janeiro (Itatiaia). New record for São Paulo.

Material examined: BRAZIL. Minas Gerais: *Passa Quatro*, 1♀, 6.II.1917, Zikán leg. (MNRJ); 1♀, 6. XI.1920, Zikán leg. (MNRJ). Rio de Janeiro: *Itatiaia*, 1♀, 16.II.1916, J. F. Zikán leg. (FIOC); 1♂, 30.III.1921, [without collector] (MNRJ); *Teresópolis*, 1♂, 1.II.1960, D. Zajciw leg. (MNRJ). São Paulo: *Guará (Cocaina)*, 1♀, XI.1972, P. S. Mota leg. (MNRJ). Santa Catarina: *Corupá*, 1♀, X.1956, A. Maller leg. (MNRJ); 1♂,

[no date and no collector] (MNRJ); *Rio Vermelho*, 1♂, II.1957, A. Maller leg. (MNRJ); 1♂, I.1958, A. Maller leg. (MNRJ); *São Bento*, 1♂, I.1956 (Rio Natal), A. Maller leg. (MNRJ).

Platyphora zonata (Germar, 1823)

(Figures 7L–7N)

Doryphora zonata Germar, 1823; Sturm, 1826: 133; 1843: 287; Dejean, 1833: 396; 1837: 420; Gemminger & Harold, 1874: 3455 (cat.); Blackwelder 1946: 672 (cat.).

Chrysomela zonata; Stål, 1862: 62.

Doryphora (Doryphora) zonata; Weise, 1916: 26 (cat.).

Stichotaenia zonata; Bechyné, 1950a: 122 (distr.); Zikán & Zikán, 1967: 133 (distr.).

Platyphora zonata; Bechyné, 1958: 532 (distr.); Bechyné & Bechyné, 1965: 95 (distr.); Bernardi & Scivittaro, 1990: 531, figs. 1–12 (biol. host); Sekerka, 2016 (check.); Flinte et al., 2017: 10 (check.).

Doryphora scutellaris Stål, 1857: 55; 1862: 62.

Chrysomela zonata var. *α*; Stål, 1862: 62.

Geographical distribution: Bechyné (1950a, 1958) and Bechyné & Bechyné (1965) recorded this species for Minas Gerais, Espírito Santo, Rio de Janeiro, São Paulo and Santa Catarina.

Type material: We examined photographs of the syntype of *P. zonata* (Figures 7L–7N) from Brazil (Bahia) (ZMHB).

Material examined: BRAZIL. Espírito Santo: *Barra de São Francisco (Córrego do Itá)*, 1♀, XI.1954, W. Zikán leg. (MNRJ); 1♀, XI.1956, W. Zikán leg. (MNRJ); *Linhares*, 1♀, XII.1965, A. Maller leg. (MNRJ); 2♂ and 3♀, XI.1967, F. M. Oliveira leg. (MNRJ); 1♂, XI.1967, Oliveira leg. (MNRJ); 1♀, XII.1967, F. M. Oliveira leg. (MNRJ); 1♂, V. 1968, Oliveira leg. (MNRJ); 1♀, IX.1968, F. M. Oliveira leg. (MNRJ); 2♀, X.1968, B. Silva leg. (MNRJ); 1♀, X.1968, F. M. Oliveira leg. (MNRJ); 3♀, XII.1968, B. Silva leg. (MNRJ); 1♂ and 1♀, XII.1969, B. Silva leg. (MNRJ); 1♂, I.1970, [without collector] (MNRJ); 1♂, X.1970, B. Silva leg. (MNRJ); 2♂ and 1♀, III.1972, B. Silva leg. (MNRJ); *Santa Teresa*, 1♂, X.1982, B. Silva leg. (MNRJ); *Vitória*, 1♀, X.1982, B. Silva leg. (MNRJ). Rio de Janeiro: *Itatiaia*, 1♀, 10.I.1948, J. F. Zikán leg. (FIOC); *Nova Friburgo*, 1♀, XII.1970, F. M. Oliveira leg. (MNRJ); *Rio de Janeiro*, 1♀, 13–14.IX.1969 (Floresta da Tijuca), Argentino & Sandin leg. (MNRJ). São Paulo: *Jabaquara*, 1♀, 7.XII.1919, [without collector] (MNRJ); 1♂, 4.I.1938, Zellibor-Hauff leg. (MNRJ); 2♀, 30.I.1938, Zellibor-Hauff leg. (MNRJ); *São Paulo*, 1♀, 30.XII.1917 (Matto do Governo), illegible collector (MNRJ); 1♀, 7.XI.1926 (Matto do Governo), illegible collector (MNRJ); 1♂, 17.XI.1929 (Matto do Governo), illegible collector (MNRJ); 1♀, 24.XI.1929 (Matto do Governo), illegible collector (MNRJ); 1♀, 1.XI.1931 (M. do Governo), J. Melzer leg. (MNRJ); 1♂, 21.XI.1931 (M. do Governo), J. Melzer leg. (MNRJ).

Acknowledgements

We thank Dr. Johannes Bergsten (NHRS), Joachim Willers (ZMHB) and Dr. Antoine Mantilleri (MNHN) for the photographs of the types; Dr. José Ricardo Mermudes (DZRJ), Márcio Felix (FIOC), Sônia Casari (MZSP), Carlos Campaner (MZSP), Harald Schilhammer (NHMW) and Michael Balke (ZSMC) for the loan of material; and the project Informatização da Coleção Entomológica do Museu Nacional / UFRJ, SIBBR / CNPq proc. 405588 / 2015-1 for the use of photographic equipment.

Authors Contributions

Aline Amanda Sampaio: substantial contribution in the concept and design of the study; contribution to data collection; contribution to data analysis and interpretation; contribution to manuscript preparation and critical revision.

Marcela Laura Monné: contribution to data analysis and interpretation; contribution to manuscript preparation and critical revision.

Conflict of Interest

The authors declare that they have no conflict of interest related to the publication of this manuscript.

References

- ACHARD, J. 1922. Tableau comparative des *Doryphorella* du groupe de *D. histrio* Ol. (Col. Chrysomelidae). *Frag. Entomol.* 3: 45-48.
- BALY, J. S. 1858. Descriptions of some new species of Chrysomelidae. *Trans. Entomol. Soc. London* 4: 352-393.
- BALY, J. S. 1859. Descriptions of new genera and species of phytophagous insects. *Ann. Mag. Nat. Hist.* 4 (19): 55-61.
- BECHYNÉ, J. 1946. O nových družích a formách Jihoamerických mandelínek. / De Chrysomelidarum Americae Meridionalis speciebus et formis novis (Col. Phytophaga, Chrysomelidae). *Acta Entomol. Mus. Nat. Pragae* 24: 87-95.
- BECHYNÉ, J. 1948. Notes sur les Chrysomelides de l'Amerique du Sud (Col.). *Rev. Entomol.* 19: 295-312.
- BECHYNÉ, J. 1950a. Notes sur les Chrysomélides de l'Amerique du Sud. II. (Col.). *Rev. Entomol.* 21: 115-156.
- BECHYNÉ, J. 1950b. La liste des Chrysomeloidea capturés par M. W. Wittmer à Muri (Brésil): 1ère partie, Eumolpidae et Chrysomelidae. (Col.). *Mitt. Münch. Entomol. Ges.* 40: 293-299.
- BECHYNÉ, J. 1951a. Chrysomeloidea Americains nouveaux ou peu connus. *Rev. Chil. Entomol.* 1: 75-112.
- BECHYNÉ, J. 1951b. Les Chrysomeloidea neotropicaux des collections du Muséum Zool. de l'Université à Helsingfors. *Not. Entomol.* 31: 59-66.
- BECHYNÉ, J. 1952. Nachträge zu den Katalogen von Blackwelder und Junk-Schenkling der neotropischen echten Chrysomeliden. (Col. Phytophaga). *Entomol. Arb. Mus. G. Frey* 3: 1-62.
- BECHYNÉ, J. 1953. Les Chrysomélides vrais capturés par le Rév. Père Pio Buck à Rio Grande do Sul (Brésil méridional) (Col. Phytophaga). *Dusenía* 4: 1-18.
- BECHYNÉ, J. 1954. Beiträge zur Kenntnis der echten Chrysomeliden (Col. Phytophaga). *Entomol. Arb. Mus. G. Frey* 5: 581-674.
- BECHYNÉ, J. 1955. Troisième note sur les Chrysomeloidea néotropicaux des collections de l'Institut Royal des Sciences Naturelles de Belgique (Col. Phytophaga) (1) Première partie. *Bull. Inst. R. Sci. Nat. Belgique* 31: 1-23.
- BECHYNÉ, J. 1957. Les Chrysomeloidea néotropicaux des collections du Muséum Zool. de l'Université à Helsingfors. *Not. Entomol.* 37: 53-57.
- BECHYNÉ, J. 1958. Notizen zu den neotropischen Chrysomeloidea (Col. Phytophaga). *Entomol. Arb. Mus. G. Frey* 9: 478-706.
- BECHYNÉ, J. & BECHYNÉ, B. S. 1965. Notes sur les Chrysomelidae s. str. de Venezuela et des pays limitrophes (Col. Phytophaga). *Rev. Fac. Agron. Maracay* 3: 44-110.
- BEDEL, L. 1887. Faunes des coléoptères du bassin de la Seine. *Ann. Soc. Entomol. France* 6: 281-384.
- BEENEN, R. 2005. Translocation in leaf beetles (Coleoptera: Chrysomelidae). *Bonn. Zool. Beitr.* 54: 179-199.
- BERNARDI, N. & SCIVITTARO, A. 1990. Estágios imaturos de *Platyphora zonata* (Germar, 1824) (Coleoptera, Chrysomelidae, Chrysomelinae). *Rev. Bras. Zool.* 7: 531-534.
- BLACKWELDER, R. E. 1946. Checklist of the coleopterous insects of Mexico, Central America, the West Indies and South America. Part 4. *Bull. U. S. Nat. Mus.* 185: 551-763.
- BOUCHARD, P., BOUSQUET, Y., DAVIES, A. E., ALONSO-ZARAZAGA, M. A., LAWRENCE, J. F., LYAL, C. H. C., REID, C. A. M., SCHMITT, M., ŚLIPIŃSKI, S. A. & SMITH, A. B. T. 2011. Family-group names in Coleoptera (Insecta). *ZooKeys* 88: 1-972. <https://dx.doi.org/10.3897/zookeys.88.807>.
- BUZZI, Z. J. 1977. Description of the larva and pupa of *Stichotaenia fervida* (Fabricius, 1775) (Coleoptera-Chrysomelidae). *Dusenía* 10: 83-87.
- BUZZI, Z. J. 1979. Sobre a morfologia e biologia da larva e pupa de *Stichotaenia quadrisignata* (Germar, 1824) (Coleoptera, Chrysomelidae, Chrysomelinae). *Dusenía* 11: 47-48.
- CHABOO, C. S., FRIEIRO-COSTA, F. A., GÓMEZ-ZURITA, J. & WESTERDUJIN, R. 2014. Origins and diversification of subsociality in leaf beetles (Coleoptera: Chrysomelidae: Cassidinae: Chrysomelinae). *J. Nat. Hist.* 48: 2325-2367. <https://dx.doi.org/10.1080/00222933.2014.909060>.
- CHEVROLAT, L. A. A. 1831. Description of *Doryphora 21-punctata*. *Mag. Zool.* 1: 1-59.
- DACCORDI, M. 1994. Nuove specie di *Platyphora* della Regione Neotropica. *Mem. Soc. Entomol. Ital.* 72: 221-232.
- DEJEAN, P. F. M. A. 1821. Catalogue de la collection de Coléoptères de M. le Baron Dejean. Crevot, Paris, viii + 138 + [2] pp.
- DEJEAN, P. F. M. A. 1833. Catalogue des Coléoptères de la collection de M. le Comte Dejean. [Livraisons 1-2]. Méquignon-Marvis, Paris, 1-176.
- DEJEAN, P. F. M. A. 1837. Catalogue des coléoptères de la collection de M. le comte Dejean. Troisième édition, revue, corrigée et augmentée. [Livraison 5]. Méquignon-Marvis Père et Fils, Paris, 385-503.
- DURY, G. J., BEDE, J. C. & WINDSOR, D. M. 2014. Preemptive circular defence of immature insects: definition and occurrences of cycloalexy revisited. *Psyche: J. Entomol.* 2014: 1-13. <http://dx.doi.org/10.1155/2014/642908>.
- FABRICIUS, J. C. 1775. Systema entomologie, sistens Insectorum classes, ordines, genera, species, adiectis synonymis, locis, descriptionibus, observationibus. Flensburgi et Lipsiae: Officina Libraria Kortii, 832p.
- FABRICIUS, J. C. 1781. Species insectorum exhibentes eorum differentias specificas, synonyma auctorum, loca natalia, metamorphosin adiectis observationibus, descriptionibus. Tomus I. Hamburgi et Kilonii: Carol. Ernest. Bohnii, 552p.
- FABRICIUS, J. C. 1787. Mantissa insectorum sistens eorum species nuper detectas adiectis characteribus genericis, differentiis specificis, emendationibus, observationibus. Tomus I. Hafniae: Christ. Gottl. Proft., 348p.
- FABRICIUS, J. C. 1792. Entomologia systematica emendata et aucta, secundum classes, ordines, genera, species, adiectis synonymis, locis, observationibus, descriptionibus. Tomus I. Hafniae: Christ. Gottl. Proft., 330p.
- FABRICIUS, J. C. 1801. Systema eleutheratorum secundum ordines, genera, species adiectis synonymis, locis, observationibus, descriptionibus. Tomus I. Kiliae: Bibliopolii Academici Novi, 506p.
- FLINTE, V., DE MACEDO, M. V. & MONTEIRO, R. F. 2009. Chrysomelids and their host plants along an altitudinal gradient in an Atlantic Rain Forest in the State of Rio de Janeiro, Brazil. *In: Research on Chrysomelidae 2* (P. Jolivet., J. Santiago-Blay & M. Schmitt, eds). Brill, Leiden, p. 31-56. [doi:10.1163/ej.9789004169470.1-299.14](https://doi.org/10.1163/ej.9789004169470.1-299.14).
- FLINTE, V., HENTZ, E., MORGADO, B. M., LIMA, A. C. M., KHATTAR, G., MONTEIRO, R. F. & MACEDO, M. V. 2015. Biology and phenology of three leaf beetle species (Chrysomelidae) in a montane forest in southeast Brazil. *In: Research on Chrysomelidae 5* (P. Jolivet., J. Santiago-Blay & M. Schmitt, eds). *ZooKeys* 547: 119-132. <https://doi.org/10.3897/zookeys.547.9015>.
- FLINTE, V., ABEJANELLA, A., DACCORDI, M., MONTEIRO, R. F., MACEDO, M. V. 2017. Chrysomelinae species (Coleoptera, Chrysomelidae) and new biological data from Rio de Janeiro, Brazil. *In: Research on Chrysomelidae 7* (Chaboo, C. S. & Schmitt, M., eds). *ZooKeys* 720: 5-22. <https://doi.org/10.3897/zookeys.720.13963>.
- FLOWERS, R. W. 2004. The genera of Chrysomelinae (Coleoptera: Chrysomelidae) in Costa Rica. *Rev. Biol. Trop.* 52: 77-83.
- GEMMINGER, M. & HAROLD, B. 1874. Catalogus coleopterorum hucusque descriptorum synonymicus et systematicus. Tom. XI. Chrysomelidae (Pars I.). Monachii: Sumptu G. Beck. p. 3276-3361.
- GERMAR, E. F. 1821. Neue exotische Käfer beschrieben von C. R. W. Wiedemann u. E. F. Germar. *Mag. Entomol.* 4: 107-183.
- GERMAR, E. F. 1823. Insectorum species novae aut minus cognitae, descriptionibus illustratae. Volumen Primum. Coleoptera. Halae: J. C. Hendelii et Filii, 624p.
- GRAY, G. R. 1832. Notices of new genera and species. *In: The animal kingdom arranged in conformity with its organization by the Baron Cuvier* (H. G. Griffith and E. Pidgeon, eds.). Whittaker, Treacher & Co., London, 570p.

- GUÉRIN-MÉNEVILLE, F. E. 1855. Catalogue des insectes coléoptères, recueillis par M. Gaetano Osculati, pendant son expédition de la région équatoriale, sur les bords du Napo et de l'Amazone. Verh. K. K. Zool. Bot. Ges. Wien 5: 573-612.
- ICMBIO (Instituto Chico Mendes de Conservação da Biodiversidade). 2013. Plano de manejo do Parque Nacional de Itatiaia. Available at <<http://www.icmbio.gov.br/parnaitatiaia>> (last accessed on 01/08/2017).
- ILLIGER, J. C. W. 1806. Nachtrag zu den Zusätzen, Bemerkungen und Beschreibungen zu Fabricii Systema Eleutheratorum. Tomus I. Mag. Insektenk. 5: 221-246.
- JACOBY, M. 1883. Biologia Centrali-Americana, Insecta, Coleoptera, Chrysomelidae. Vol. 6. Part. 1. R. H. Porter, London, p. 225-264.
- JACOBY, M. 1903. Descriptions of new species of South America Coleoptera of the family Chrysomelidae. Proc. Zool. Soc. London 2: 30-59.
- JOLIVET, P., VASCONCELLOS-NETO, J. & WEINSTEIN, P. 1990. Cycloaexy: a new concept in the larval defense of insects. Insecta Mundi 4: 133-142.
- JOLIVET, P. & VERMA, K. K. 2002. Biology of leaf beetles. Intercept Limited, Andover, Hampshire, UK, 327p.
- LUCAS, P. H. 1859. Entomologie. In: Animaux nouveaux ou rares recueillis pendant l'expédition dans les parties centrales de l'Amérique du Sud, de Rio de Janeiro a Lima, et de Lima au Pará, exécutée par ordre du Gouvernement Français pendant les années 1843 a 1847, sous la direction du Comte Francis de Castelnau. Bertrand, Paris, 204p.
- MEDAL, J. C., GANDOLFO, D., PITELLI, R. A., SANTANA, A., CUDA, J. P. & SUDBRINK, D. L. 2000. Progress and prospects for biological control of *Solanum viarum* Dunal in the USA. In: Proceedings of the X International Symposium on Biological Control of Weeds (N. Spencer, ed). Montana State University, Bozeman, p. 627-631.
- MEDEIROS, L. & VASCONCELLOS-NETO, J. 1994. Host plant and seasonal abundance patterns of some Brazilian Chrysomelidae. In: Novel aspects of the biology of Chrysomelidae (P. Jolivet, M. L. Cox & E. Petitpierre, eds). Kluwer Academic Publishers, Dordrecht, p. 185-189.
- MONRÓS, F. & BECHYNÉ, J. 1956. Über einige verkannte Chrysomeliden-Namen. Entomol. Arb. Mus. G. Frey 7: 1118-1137.
- MORELLATO, L. P. & HADDAD, C. F. B. 2000. Introduction: the Brazilian Atlantic Forest. Biotropica 32: 786-792.
- MORGADO, B. M., SANTOS, E. H. P., FLINTE, V., MACEDO, M. V., MONTEIRO, R. F. 2009. Aspectos da biologia e da ecologia de duas espécies de *Platyphora* (Coleoptera, Chrysomelidae, Chrysomelinae) do Parque Nacional da Serra dos Órgãos, RJ. In: IX Congresso de Ecologia do Brasil, São Lourenço. Anais do IX Congresso de Ecologia do Brasil.
- MOTSCHULSKY, V. I. 1860. Coléoptères de la Sibérie orientale et en particulier des rives de l'Amour. In: Reisen und Forschungen im Amurlande (L. von Schrenck, ed). Vol. 2. St. Petersburg, p. 77-257.
- MOURA, L. D. A. & GRAZIA, J. 2011. Record of *Podisus nigrispinus* (Dallas) (Hemiptera: Pentatomidae) preying on *Metrogaleruca obscura* Degeer (Coleoptera: Chrysomelidae). Neotrop. Entomol. 40: 619-621.
- OLCKERS, T. 1998. Biology and host range of *Platyphora semiviridis*, a leaf beetle evaluated as a potential biological control agent for *Solanum mauritanium* in South Africa. BioControl 43: 225-239.
- OLCKERS, T. 1999. Biological control of *Solanum mauritanium* Scopoli (Solanaceae) in South Africa: a review of candidate agents, progress and future prospects. Afr. Entomol. Memoir 1: 65-73.
- OLCKERS, T. 2000. Biology and physiological host range of four species of *Platyphora* Gistel (Coleoptera: Chrysomelidae) associated with *Solanum mauritanium* Scop. (Solanaceae) in South America. Coleopt. Bull. 54: 497-510.
- OLCKERS, T.; MEDAL, J. C. & GANDOLFO, D. E. 2002. Insect herbivores associated with species of *Solanum* (Solanaceae) in northeastern Argentina and southeastern Paraguay, with reference to biological control of weeds in South Africa and the United States of America. Fla. Entomol. 85: 254-260.
- OLIVIER, A. G. 1790. In Encyclopédie méthodique, histoire naturelle, insectes. Tome 5. Paris, Panckoucke, 723p.
- OLIVIER, A. G. 1807. Entomologie, ou histoire naturelle des insectes, avec leurs caractères génériques et spécifiques, leur description, leur synonymie, et leur figure enluminée. Coléoptères. Tome 5. Paris, Desray, 612p.
- PERTY, J. A. M. 1832. De insectorum in America meridionali habitantium vitae genera, moribus ac distributione geographica observationes nonnullae. In: Delectus animalium articulatum quae in itinere per Brasilian annis MDCCCXVII-MDCCCXX jussu at auspiciis Maximiliani Josephi I. Bavariae regis augustissime peracto collegerunt Dr. J. B. de Spix et Dr. C. F. Ph. De Martius. Monachii, p. 61-124.
- REID, C. A. M. 2014. Chrysomelinae Latreille, 1802. In: Handbook of Zoology Arthropoda: Insecta: Coleoptera, Beetles Morphology & Systematics (Leschen, R. A. B. & Beutel, R. G., eds). Vol 3. De Gruyter, p. 243-251.
- SAMPAIO, A. A. & MONNÉ, M. L. 2017. New synonymy in *Platyphora* Gistel (Coleoptera, Chrysomelidae, Chrysomelinae). Rev. Bras. Entomol. 61 (3): 262-265. <http://dx.doi.org/10.1016/j.rbe.2017.04.001>.
- SANTIAGO-BLAY, J. A., JOLIVET, P. & VERMA, K. K. 2012. A natural history of conspecific aggregations in terrestrial arthropods, with emphasis on cycloaexy in leaf beetles (Coleoptera: Chrysomelidae). Terr. Arthropod Rev. 5: 289-355. <https://doi.org/10.1163/18749836-05031054>.
- SCHRODER, R. F., PUTTLER, B., IZHEVSKY, S. S. & GANDOLFO, D. 1994. Viviparity and larval development of *Platyphora quadrisignata* (Germar) (Coleoptera: Chrysomelidae) in Brazil. Coleopt. Bull. 48: 237-243.
- SEENO, T. N., SCHERER, G. & CORWIN, K. S. 1976. Jan Bechyne necrology and bibliography. Entomol. Arb. Mus. G. Frey 27: 1-69.
- SEKERKA, L. 2016. Chrysomelinae in Catálogo Taxonômico da Fauna do Brasil. PNUD. Available at <<http://fauna.jbrj.gov.br/fauna/listaBrasil/>> (last accessed on 01/08/2017).
- STÅL, C. 1857. Till kändedomen af Phytophaga. Öfvers. K. Svenska Vetensk. Akad. Förh. 14: 53-63.
- STÅL, C. 1858. Till kändedomen om Amerikas chrysomeliner. Öfvers. K. Svenska Vetensk. Akad. Förh. 15: 469-478.
- STÅL, C. 1859. Bidrag till kändedomen om Amerikas chrysomeliner. Öfvers. K. Svenska Vetensk. Akad. Förh. 16: 305-326.
- STÅL, C. 1862-1865. Monographie des Chrysomélides de l'Amérique. Uppsala, C. A. Leffler, 365p.
- STURM, J. 1826. Catalog meiner Insecten-Sammlung. Erster Theil, Käfer. Author's edition, Nurnernberg, Germany, 207p.
- STURM, J. 1843. Catalog der Kaefer-Sammlung von Jacob Sturm. Gedruckt auf Kosten des Verfassers, Nurnernberg, Germany, 386p.
- VASCONCELLOS-NETO, J. & JOLIVET, P. 1988. Une nouvelle stratégie de défense: la stratégie de défense (annulaire cycloaexie) chez quelques larves de Chrysomélides brésiliens [Col.]. Bull. Soc. Entomol. France 92: 291-299.
- WEISE, J. 1916. Chrysomelidae: 12. Chrysomelinae. In: Coleopterorum Catalogus. Pars 68. (S. Schenkling, ed.). W. Junk, Berlin, 255 pp.
- WINDSOR, D. M., DURY, G. J., FRIEIRO-COSTA, F. A., LANCKOWSKY, S. & PASTEELS, J. M. 2013. Subsocial Neotropical Doryphorini (Chrysomelidae, Chrysomelinae): new observations on behavior, host plants and systematics. In: Research on Chrysomelidae 4 (P. Jolivet., J. Santiago-Blay & M. Schmitt, eds). ZooKeys 332: 71-93. <https://doi.org/10.3897/zookeys.332.5199>.
- ZIKÁN, J. F. & ZIKÁN, W. 1967. A Inseto-Fauna do Itatiaia e da Mantiqueira. Rev. Bras. Entomol. 12: 118-154.

Received: 20/09/2017

Revised: 18/12/2017

Accepted: 23/12/2017

Published online: 01/02/2018